

## Recombinant Human CLEC4D Protein, His-tagged

Cat. No. CLEC4D-058H Lot. No. (See product label)

### SPECIFICATION

**Product Overview** Recombinant Human CLEC4D Protein with His tag was expressed in E. coli.

**Species** Human

**Source** E.coli

**Description**

Calcium-dependent lectin that acts as a pattern recognition receptor (PRR) of the innate immune system: recognizes damage-associated molecular patterns (DAMPs) of pathogen-associated molecular patterns (PAMPs) of bacteria and fungi. The PAMPs include alpha-mannans on C.albicans hypheas and mycobacterial trehalose 6,6'-dimycolate (TDM). Interacts with signaling adapter Fc receptor gamma chain/FCER1G, likely via CLEC4E, to form a functional complex in myeloid cells. Binding of mycobacterial TDM or C.albicans alpha-mannans to this receptor complex leads to phosphorylation of the immunoreceptor tyrosine-based activation motif (ITAM) of FCER1G, triggering activation of SYK, CARD9 and NF-kappa-B, consequently driving maturation of antigen-presenting cells and shaping antigen-specific priming of T-cells toward effector T-helper 1 and T-helper 17 cell subtypes. The heterodimer formed with CLEC6A is active against fungal infection. Functions as an endocytic receptor. May be involved in antigen uptake at the site of infection, either for clearance of the antigen, or for processing and further presentation to T-cells.

**Molecular Mass** ~19 kDa

 Tel: 1-631-559-9269 1-516-512-3133

 Email: [info@creative-biomart.com](mailto:info@creative-biomart.com)  Fax: 1-631-938-8127

 45-1 Ramsey Road, Shirley, NY 11967, USA

<b>AA Sequence</b>	CLVTHHNFSRCKRGTGVHKLEHHAKLKCIKEKSELKSAEGSTWNCCPIDWRAFQSN CYFPLTDNKTWAESERNCSGGMGAHLMTISTEAEQNFIIQFLDRRLSYFLGLRDENAK GQWRWVDQTPFNPRRVFWHKNEPDNSQGENCVVLVYNQDKWAWNDVPCNFEAS RICKIPGTTLN
<b>Purity</b>	Transferred into competent cells and the supernatant was purified by NI column affinity chromatography and the purity is > 85% (by SDS-PAGE).
<b>Notes</b>	For research use only, not for use in diagnostic procedure.
<b>Storage</b>	Store at 4 centigrade short term. Aliquot and store at -20 centigrade long term. Avoid freeze-thaw cycles.
<b>Storage Buffer</b>	PBS, 4M Urea, pH7.4

## GENE INFORMATION

<b>Gene Name</b>	<a href="#">CLEC4D C-type lectin domain family 4, member D [ Homo sapiens (human) ]</a>
<b>Official Symbol</b>	<a href="#">CLEC4D</a>
<b>Synonyms</b>	CLEC4D; C-type lectin domain family 4, member D; C type (calcium dependent, carbohydrate recognition domain) lectin, superfamily member 8 , CLECSF8; C-type lectin domain family 4 member D; Mpcl; C-type lectin receptor; macrophage C-type lectin; C-type lectin-like receptor 6; C-type lectin superfamily member 8; C-type (calcium dependent, carbohydrate-recognition domain) lectin, superfamily member 8; MCL; MPCL; CLEC6; CLEC-6; CLECSF8; MGC40078;
<b>Gene ID</b>	<a href="#">338339</a>
<b>mRNA Refseq</b>	<a href="#">NM_080387</a>

 Tel: 1-631-559-9269 1-516-512-3133

 Email: [info@creative-biomart.com](mailto:info@creative-biomart.com)  Fax: 1-631-938-8127

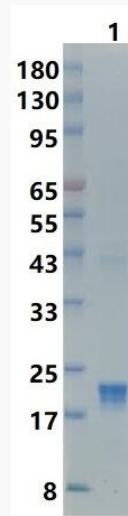
 45-1 Ramsey Road, Shirley, NY 11967, USA

**Protein Refseq** NP\_525126

**MIM** 609964

**UniProt ID** Q8WXI8

**SDS-PAGE**



 Tel: 1-631-559-9269 1-516-512-3133

 Email: [info@creative-biomart.com](mailto:info@creative-biomart.com)  Fax: 1-631-938-8127

 45-1 Ramsey Road, Shirley, NY 11967, USA