

Recombinant Human CLEC4D Protein (39-215 aa), His-SUMO-tagged

Cat. No. CLEC4D-1083H Lot. No. (See product label)

SPECIFICATION

Product Overview Recombinant Human CLEC4D Protein (39-215 aa) is produced by E. coli expression system. This protein is fused with a 6xHis-SUMO tag at the N-terminal. Research Area: Immunology. Protein Description: Partial.

Species Human

Source E.coli

ProteinLength 39-215 aa

Description Functions as an endocytic receptor. May be involved in antigen uptake at the site of infection, either for clearance of the antigen, or for processing and further presentation to T cells.

Form Tris-based buffer, 50% glycerol

Molecular Mass 36.7 kDa

AA Sequence
 CLVTHHNFSRCKRGTVHVKLEHHAKLKCIEKSELKSAEGSTWNCPPIDWRAFQSN
 CYFPLTDNKTWAESERNCSGMGAHLMTISTEAEQNFIIQLDRRLSYFLGLRDENAK
 GQWRWVDQTPFNPRRVFVHKNEPDNSQGENCVVLVYNQDKWAWNDVPCNFEAS
 RICKIPGTTLN

Purity > 90% as determined by SDS-PAGE.

 Tel: 1-631-559-9269 1-516-512-3133

 Email: info@creative-biomart.com  Fax: 1-631-938-8127

 45-1 Ramsey Road, Shirley, NY 11967, USA

Notes	Repeated freezing and thawing is not recommended. Store working aliquots at 4 centigrade for up to one week.
Storage	The shelf life is related to many factors, storage state, buffer ingredients, storage temperature and the stability of the protein itself. Generally, the shelf life of liquid form is 6 months at -20 centigrade/-80 centigrade. The shelf life of lyophilized form is 12 months at -20 centigrade/-80 centigrade.
Concentration	A hardcopy of COA with concentration instruction is sent along with the products.

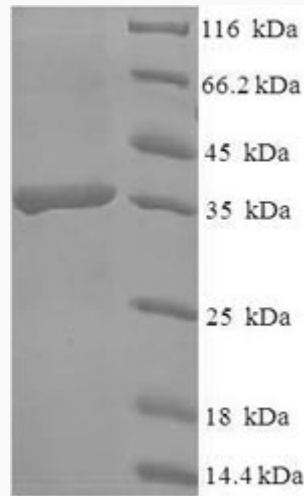
GENE INFORMATION

Gene Name	CLEC4D C-type lectin domain family 4, member D [Homo sapiens]
Official Symbol	CLEC4D
Synonyms	CLEC4D; Mpcl; MCL; MPCL; CLEC6; CLEC-6; CLECSF8; MGC40078;
Gene ID	338339
mRNA Refseq	NM_080387
Protein Refseq	NP_525126
MIM	609964
UniProt ID	Q8WXI8

 Tel: 1-631-559-9269 1-516-512-3133

 Email: info@creative-biomart.com  Fax: 1-631-938-8127

 45-1 Ramsey Road, Shirley, NY 11967, USA



(Tris-Glycine gel) Discontinuous SDS-PAGE (reduced) with 5% enrichment gel and 15% separation gel.

 Tel: 1-631-559-9269 1-516-512-3133

 Email: info@creative-biomart.com  Fax: 1-631-938-8127

 45-1 Ramsey Road, Shirley, NY 11967, USA