

Recombinant Human CLEC4D Protein, GST-tagged

Cat. No. CLEC4D-1468H Lot. No. (See product label)

SPECIFICATION

Product Overview	Human CLEC4D full-length ORF (AAH32313, 41 a.a. - 215 a.a.) recombinant protein with GST-tag at N-terminal.
Species	Human
Source	Wheat Germ
Description	This gene encodes a member of the C-type lectin/C-type lectin-like domain (CTL/CTLD) superfamily. Members of this family share a common protein fold and have diverse functions, such as cell adhesion, cell-cell signalling, glycoprotein turnover, and roles in inflammation and immune response. This gene is closely linked to other CTL/CTLD superfamily members on chromosome 12p13 in the natural killer gene complex region. [provided by RefSeq, Jul 2008]
Molecular Mass	44.99 kDa
AA Sequence	VTHHNF SRCKRGTGVH KLEH HAKLKC I E KSELKSAEGSTWNCCPIDWRAFQSN CY FPLTDNKTWAESERNCSGMGAHLMTISTEAEQNFIIQLDRRLSYFLGLRDENAKGQ WRWVDQTPFNPRRVFWHKNEPDNSQGENCEVVLVYNQDKWAWNDVPCNFESRI CKIPGTTLN
Applications	Enzyme-linked Immunoabsorbent Assay Western Blot (Recombinant protein) Antibody Production Protein Array

 Tel: 1-631-559-9269 1-516-512-3133

 Email: info@creative-biomart.com  Fax: 1-631-938-8127

 45-1 Ramsey Road, Shirley, NY 11967, USA

Notes	Best use within three months from the date of receipt of this protein.
Storage	Store at -80 centigrade. Aliquot to avoid repeated freezing and thawing.
Storage Buffer	50 mM Tris-HCl, 10 mM reduced Glutathione, pH=8.0 in the elution buffer.
GENE INFORMATION	
Gene Name	CLEC4D C-type lectin domain family 4, member D [Homo sapiens]
Official Symbol	CLEC4D
Synonyms	CLEC4D; C-type lectin domain family 4, member D; C type (calcium dependent, carbohydrate recognition domain) lectin, superfamily member 8 , CLECSF8; C-type lectin domain family 4 member D; Mpcl; C-type lectin receptor; macrophage C-type lectin; C-type lectin-like receptor 6; C-type lectin superfamily member 8; C-type (calcium dependent, carbohydrate-recognition domain) lectin, superfamily member 8; MCL; MPCL; CLEC6; CLEC-6; CLECSF8; MGC40078;
Gene ID	338339
mRNA Refseq	NM_080387
Protein Refseq	NP_525126
MIM	609964
UniProt ID	Q8WXI8

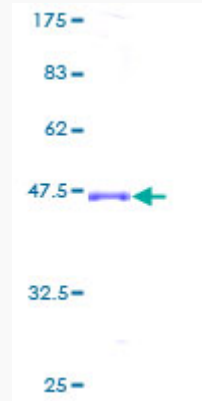
 Tel: 1-631-559-9269 1-516-512-3133

 Email: info@creative-biomart.com  Fax: 1-631-938-8127

 45-1 Ramsey Road, Shirley, NY 11967, USA

Quality Control

Testing:



12.5% SDS-PAGE Stained with Coomassie Blue.

 Tel: 1-631-559-9269 1-516-512-3133

 Email: info@creative-biomart.com  Fax: 1-631-938-8127

 45-1 Ramsey Road, Shirley, NY 11967, USA