

Recombinant Human CLEC4D Protein, Myc/DDK-tagged, C13 and N15-labeled

Cat. No. CLEC4D-2491H **Lot. No.** (See product label)

SPECIFICATION

Product Overview	CLEC4D MS Standard C13 and N15-labeled recombinant protein (NP_525126) with a C-terminal MYC/DDK tag, was expressed in HEK293 cells.
Species	Human
Source	HEK293
Description	This gene encodes a member of the C-type lectin/C-type lectin-like domain (CTL/CTLD) superfamily. Members of this family share a common protein fold and have diverse functions, such as cell adhesion, cell-cell signalling, glycoprotein turnover, and roles in inflammation and immune response. This gene is closely linked to other CTL/CTLD superfamily members on chromosome 12p13 in the natural killer gene complex region.
Molecular Mass	24.7 kDa
AA Sequence	MGLEKPQSKLEGGMHPQLIPSVIAVVFILLLSVCFIASCLVTHHNF SRCKRGTVHKL EHHAKLKCIKEKSELKSAEGSTWNCCPIDWRAFQSNCFPLTDNKTWAESERNCSG MGAHLMTISTEAEQNFIIQFLDRRLSYFLGLRDENAKGQWRWVDQTPFNPRRVFWH KNEPDNSQGENCVVLVYNQDKWAWNDVPCNFEASRICKIPGTTLNTRTRPLEQKLI SEEDLAANDILDYKDDDDKV
Purity	> 80% as determined by SDS-PAGE and Coomassie blue staining

 Tel: 1-631-559-9269 1-516-512-3133

 Email: info@creative-biomart.com  Fax: 1-631-938-8127

 45-1 Ramsey Road, Shirley, NY 11967, USA

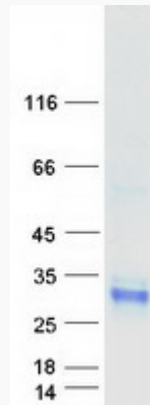
Stability	Stable for 3 months from receipt of products under proper storage and handling conditions.
Storage	Store at -80 centigrade. Avoid repeated freeze-thaw cycles.
Concentration	50 µg/mL as determined by BCA
Storage Buffer	100 mM glycine, 25 mM Tris-HCl, pH 7.3.
GENE INFORMATION	
Gene Name	CLEC4D C-type lectin domain family 4 member D [Homo sapiens (human)]
Official Symbol	CLEC4D
Synonyms	CLEC4D; C-type lectin domain family 4, member D; C type (calcium dependent, carbohydrate recognition domain) lectin, superfamily member 8, CLECSF8; C-type lectin domain family 4 member D; Mpcl; C-type lectin receptor; macrophage C-type lectin; C-type lectin-like receptor 6; C-type lectin superfamily member 8; C-type (calcium dependent, carbohydrate-recognition domain) lectin, superfamily member 8; MCL; MPCL; CLEC6; CLEC-6; CLECSF8; MGC40078;
Gene ID	338339
mRNA Refseq	NM_080387
Protein Refseq	NP_525126
MIM	609964
UniProt ID	Q8WXI8

 Tel: 1-631-559-9269 1-516-512-3133

 Email: info@creative-biomart.com  Fax: 1-631-938-8127

 45-1 Ramsey Road, Shirley, NY 11967, USA

SDS-PAGE



 Tel: 1-631-559-9269 1-516-512-3133

 Email: info@creative-biomart.com  Fax: 1-631-938-8127

 45-1 Ramsey Road, Shirley, NY 11967, USA