

Recombinant Human CLEC4G protein, Fc-tagged

Cat. No. CLEC4G-352H Lot. No. (See product label)

SPECIFICATION

Product Overview	Recombinant Human CLEC4G protein (Lys55-Cys293), fused to human IgG1 Fc tag at N-terminus, was expressed in human 293 cells (HEK293).
Species	Human
Source	HEK293
ProteinLength	239
Description	C-type lectin superfamily 4, member G (CLEC4G) is also known as liver and lymph node sinusoidal endothelial cell C-type lectin (LSECTin), which is a member of subgroup II of the C-type (Ca ²⁺ -dependent) lectin superfamily. CLEC4G/LSECTin binds to mannose, GlcNAc, and fucose in a Ca ²⁺ -dependent manner. In addition, CLEC4G/LSECTin has the ability to bind to surface glycoproteins of enveloped viruses. In particular, interaction of LSECTin with the surface glycoproteins of severe acute respiratory syndrome (SARS) coronavirus and Ebola virus has been described, and LSECTin-mediated infection of cells by Ebola virus has been demonstrated.
Form	Lyophilized from 0.22 um filtered solution in 50 mM Tris, 100 mM Glycine, pH7.5, 10% trehalose.
Molecular Mass	The protein has a calculated MW of 52.1 kDa. The protein migrates as 58-66 kDa under reducing (R) condition (SDS-PAGE) due to glycosylation.
Endotoxin	Less than 1.0 EU per ug by the LAL method.

 Tel: 1-631-559-9269 1-516-512-3133

 Email: info@creative-biomart.com  Fax: 1-631-938-8127

 45-1 Ramsey Road, Shirley, NY 11967, USA

Purity	>85% as determined by SDS-PAGE.
Storage	<p>For long term storage, the product should be stored at lyophilized state at -20 centigrade or lower.</p> <p>Please avoid repeated freeze-thaw cycles.</p> <p>This product is stable after storage at:</p> <p>-20 centigrade to -70 centigrade for 12 months in lyophilized state; -70 centigrade for 3 months under sterile conditions after reconstitution.</p>
Reconstitution	It is recommended that sterile water be added to the vial to prepare a stock solution of 0.2 ug/ul. Centrifuge the vial at 4°C before opening to recover the entire contents.
GENE INFORMATION	
Gene Name	CLEC4G
Official Symbol	CLEC4G
Synonyms	CLEC4G; C-type lectin domain family 4, member G; C type lectin superfamily 4, member G; C-type lectin domain family 4 member G; LSECTin; UNQ431; C-type lectin superfamily 4, member G; liver and lymph node sinusoidal endothelial cell C-type lectin; LP2698; DTTR431
Gene ID	339390
mRNA Refseq	NM_001244856
Protein Refseq	NP_001231785
MIM	616256

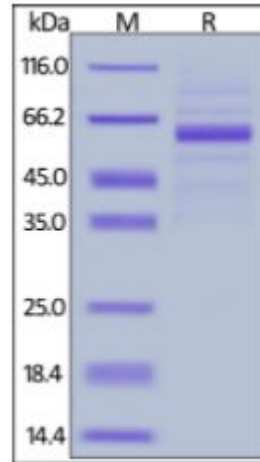
 Tel: 1-631-559-9269 1-516-512-3133

 Email: info@creative-biomart.com  Fax: 1-631-938-8127

 45-1 Ramsey Road, Shirley, NY 11967, USA

UniProt ID

Q6UXB4

SDS-PAGE of
CLEC4G-352H

Human LSEctin, Fc Tag on SDS-PAGE under reducing (R) condition. The gel was stained overnight with Coomassie Blue. The purity of the protein is greater than 85%.

 Tel: 1-631-559-9269 1-516-512-3133

 Email: info@creative-biomart.com  Fax: 1-631-938-8127

 45-1 Ramsey Road, Shirley, NY 11967, USA