

## Active Recombinant Mouse Clec4g Protein, HA-tagged

Cat. No. CLEC4G-3569M Lot. No. (See product label)

### SPECIFICATION

<b>Product Overview</b>	Recombinant Mouse Clec4g (Leu52-Tyr294) protein with Hemagglutinin (YPYDVPDYA) tag at N-terminus was expressed in chinese hamster ovary cell line.
<b>Species</b>	Mouse
<b>Source</b>	CHO
<b>ProteinLength</b>	52-294
<b>Description</b>	Binds mannose, N-acetylglucosamine (GlcNAc) and fucose, but not galactose, in a Ca <sup>2+</sup> -dependent manner.
<b>Form</b>	Lyophilized
<b>Bio-activity</b>	Measured by its binding ability in a functional ELISA. When Recombinant Mouse BTNL4 Fc Chimera is immobilized at 2 µg/mL (100 µL/well), Recombinant Mouse LSEctin/CLEC4G binds with an ED50 of 0.15-1.2 µg/mL.
<b>Molecular Mass</b>	29 kDa
<b>N-terminal Sequence Analysis</b>	Tyr
<b>Endotoxin</b>	<0.1 EU/µg of the protein by the LAL method.

 Tel: 1-631-559-9269 1-516-512-3133

 Email: [info@creative-biomart.com](mailto:info@creative-biomart.com)  Fax: 1-631-938-8127

 45-1 Ramsey Road, Shirley, NY 11967, USA

<b>Purity</b>	>95% by SDS-PAGE visualized with Silver Staining and quantitative densitometry by Coomassie® Blue Staining.
<b>Storage</b>	Use a manual defrost freezer and avoid repeated freeze-thaw cycles. 12 months from date of receipt, -20 to -70 centigrade as supplied. 1 month, 2 to 8 centigrade under sterile conditions after reconstitution. 3 months, -20 to -70 centigrade under sterile conditions after reconstitution.
<b>Storage Buffer</b>	Lyophilized from a 0.2 µm filtered solution in PBS.
<b>Reconstitution</b>	Reconstitute at 500 µg/mL in PBS.

## GENE INFORMATION

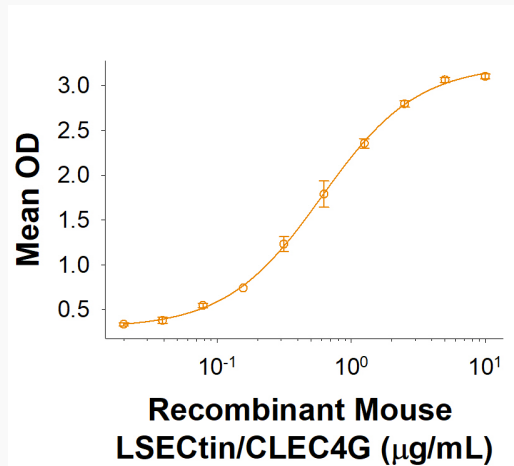
<b>Gene Name</b>	Clec4g C-type lectin domain family 4, member g [ <i>Mus musculus</i> (house mouse) ]
<b>Official Symbol</b>	Clec4g
<b>Synonyms</b>	Clec4g; C-type lectin domain family 4, member g; 4930572L20Rik; C-type lectin domain family 4 member G
<b>Gene ID</b>	75863
<b>mRNA Refseq</b>	NM_029465
<b>Protein Refseq</b>	NP_083741
<b>UniProt ID</b>	Q8BNX1

 Tel: 1-631-559-9269 1-516-512-3133

 Email: [info@creative-biomart.com](mailto:info@creative-biomart.com)  Fax: 1-631-938-8127

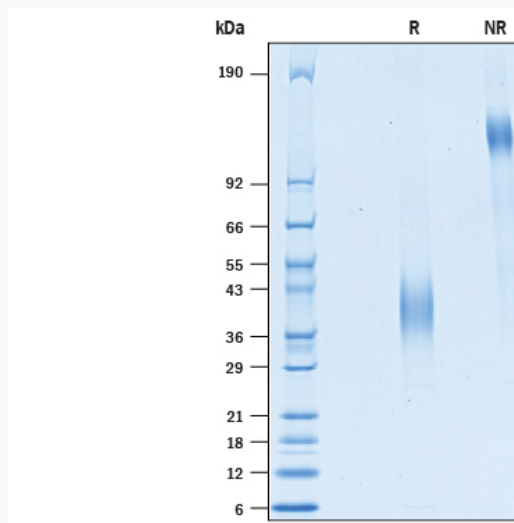
 45-1 Ramsey Road, Shirley, NY 11967, USA

### Binding Activity



When Recombinant Mouse BTNL4 Fc Chimera is immobilized at 2  $\mu\text{g/mL}$ , Recombinant Mouse LSECtin/CLEC4G binds with an ED50 of 0.15-1.2  $\mu\text{g/mL}$ .

### SDS-PAGE



2  $\mu\text{g/lane}$  of Recombinant Mouse LSECtin/CLEC4G was resolved with SDS-PAGE under reducing (R) and non-reducing (NR) conditions and visualized by Coomassie<sup>®</sup> Blue staining, showing bands at 36-44 kDa and 110-130 kDa,

Tel: 1-631-559-9269 1-516-512-3133

Email: [info@creative-biomart.com](mailto:info@creative-biomart.com) Fax: 1-631-938-8127

45-1 Ramsey Road, Shirley, NY 11967, USA



repectively.

 Tel: 1-631-559-9269 1-516-512-3133

 Email: [info@creative-biomart.com](mailto:info@creative-biomart.com)  Fax: 1-631-938-8127

 45-1 Ramsey Road, Shirley, NY 11967, USA