

Recombinant Human CLEC4M Protein, hlgG/His-tagged

Cat. No. CLEC4M-02H Lot. No. (See product label)

SPECIFICATION

Product Overview Recombinant human CD299 (570aa), fused to hlgG-His-tag at C-terminus, was expressed in insect cell and purified by using conventional chromatography techniques.

Species Human

Source Insect Cells

ProteinLength 72-399

Description This gene encodes a C-type lectin that functions in cell adhesion and pathogen recognition. This receptor recognizes a wide range of evolutionarily divergent pathogens with a large impact on public health, including tuberculosis mycobacteria, and viruses including Ebola, hepatitis C, HIV-1, influenza A, West Nile virus and the SARS-CoV acute respiratory syndrome coronavirus. The protein is organized into four distinct domains: a C-terminal carbohydrate recognition domain, a flexible tandem-repeat neck domain of variable length, a transmembrane region and an N-terminal cytoplasmic domain involved in internalization. This gene is closely related in terms of both sequence and function to a neighboring gene, CD209 (Gene ID: 30835), also known as DC-SIGN. The two genes differ in viral recognition and expression patterns, with this gene showing high expression in endothelial cells of the liver, lymph node and placenta. Polymorphisms in the tandem repeat neck domain are associated with resistance to SARS infection.

 Tel: 1-631-559-9269 1-516-512-3133

 Email: info@creative-biomart.com  Fax: 1-631-938-8127

 45-1 Ramsey Road, Shirley, NY 11967, USA

Form	Liquid
Molecular Mass	64.8 kDa
AA Sequence	VSKVPSSLSQEQSEQDAIQNLTLKAAVGEELSEKSKLQEIQELTQLKAAVGEPE KSKLQEIQELTRLKAAVGEPEKSKLQEIQELTRLKAAVGEPEKSKLQEIQELTR LKAAVGEPEKSKLQEIQELTELKAAVGEPEKSKLQEIQELTQLKAAVGEPLDQS KQQQIQELTDLKTAFERLCRHCPKDWTFQGNCFMSNSQRNWHDSVTACQEV AQLVVIKTAEEQNFLQLQTSRSNRFSWMGLSDLNQEGTWQWVDGSPSPSFQRY WNSGEPNNSGNEDCAEFSGSGWVNDNRCDVDNYWICKKPAACFRDE
Endotoxin	< 1 EU/μg of protein (determined by LAL method)
Purity	>95% by SDS-PAGE
Applications	SDS-PAGE
Storage	Can be stored at 2 to 8 centigrade for 1 week. For long term storage, aliquot and store at -20 to -80 centigrade. Avoid repeated freezing and thawing cycles.
Concentration	0.5 mg/mL (determined by Absorbance at 280nm)
Storage Buffer	Phosphate-Buffered Saline (pH 7.4) containing 10% glycerol
GENE INFORMATION	
Gene Name	CLEC4M C-type lectin domain family 4 member M [Homo sapiens (human)]
Official Symbol	CLEC4M
Synonyms	CLEC4M; C-type lectin domain family 4 member M; CD299; LSIGN; CD209L; L-

 Tel: 1-631-559-9269 1-516-512-3133

 Email: info@creative-biomart.com  Fax: 1-631-938-8127

 45-1 Ramsey Road, Shirley, NY 11967, USA

SIGN; DCSIGNR; HP10347; DC-SIGN2; DC-SIGNR; C-type lectin domain family 4 member M; CD209 antigen-like protein 1; CD299 antigen; DC-SIGN-related protein; dendritic cell-specific ICAM-3-grabbing non-integrin 2; liver/lymph node-specific ICAM-3 grabbing non-integrin; mannose binding C-type lectin DC-SIGNR

Gene ID 10332

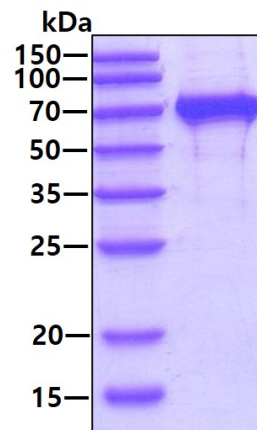
mRNA Refseq NM_014257

Protein Refseq NP_055072

MIM 605872

UniProt ID Q9H2X3

SDS-Page



3 µg by SDS-PAGE under reducing condition and visualized by coomassie blue stain

 Tel: 1-631-559-9269 1-516-512-3133

 Email: info@creative-biomart.com  Fax: 1-631-938-8127

 45-1 Ramsey Road, Shirley, NY 11967, USA