

Recombinant Human CLEC4M Protein (Leu241-Glu399), N-His tagged

Cat. No. CLEC4M-1084H **Lot. No.** (See product label)

SPECIFICATION

Product Overview	Recombinant Human CD299/CLEC4M (Leu241-Glu399) fused with the N-His tag was expressed in E. coli.
Species	Human
Source	E.coli
ProteinLength	Leu241-Glu399
Form	Lyophilized powder/frozen liquid
Molecular Mass	20.91 kDa
Purity	>90% as determined by SDS-PAGE.
Notes	For research use only.
Storage	Use a manual defrost freezer and avoid repeated freeze thaw cycles. Store at 2 to 8 centigrade for one week. Store at -20 to -80 centigrade for twelve months from the date of receipt.
Storage Buffer	0.01M PBS, pH 7.4, 0.02% NLS
Reconstitution	Reconstitute in sterile water for a stock solution.

 Tel: 1-631-559-9269 1-516-512-3133

 Email: info@creative-biomart.com  Fax: 1-631-938-8127

 45-1 Ramsey Road, Shirley, NY 11967, USA

Shipping

They are shipped out with dry ice/blue ice unless customers require otherwise.

GENE INFORMATION
Gene Name

CLEC4M C-type lectin domain family 4, member M [Homo sapiens (human)]

Official Symbol

CLEC4M

Synonyms

CLEC4M; C-type lectin domain family 4, member M; CD209L, CD299, CD299 antigen; C-type lectin domain family 4 member M; DC SIGN2; DC SIGNR; DCSIGNR; HP10347; LSIGN; CD299 antigen; DC-SIGN-related protein; CD209 antigen-like protein 1; mannose binding C-type lectin DC-SIGNR; dendritic cell-specific ICAM-3-grabbing non-integrin 2; liver/lymph node-specific ICAM-3 grabbing non-integrin; liver/lymph node-specific ICAM-3-grabbing non-integrin; CD299; CD209L; L-SIGN; DC-SIGN2; DC-SIGNR; MGC47866; MGC129964;

Gene ID

10332

mRNA Refseq

NM_001144904

Protein Refseq

NP_001138376

MIM

605872

UniProt ID

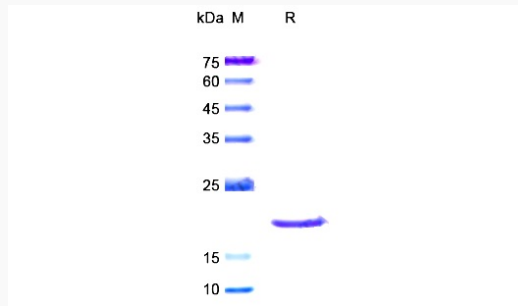
Q9H2X3

 Tel: 1-631-559-9269 1-516-512-3133

 Email: info@creative-biomart.com  Fax: 1-631-938-8127

 45-1 Ramsey Road, Shirley, NY 11967, USA

SDS-PAGE



 Tel: 1-631-559-9269 1-516-512-3133

 Email: info@creative-biomart.com  Fax: 1-631-938-8127

 45-1 Ramsey Road, Shirley, NY 11967, USA