

Recombinant Human CLEC4M Protein, GST-tagged

Cat. No. CLEC4M-1471H Lot. No. (See product label)

SPECIFICATION

Product Overview Human CLEC4M partial ORF (NP_055072, 285 a.a. - 394 a.a.) recombinant protein with GST-tag at N-terminal.

Species Human

Source Wheat Germ

Description

This gene encodes a transmembrane receptor and is often referred to as L-SIGN because of its expression in the endothelial cells of the lymph nodes and liver. The encoded protein is involved in the innate immune system and recognizes numerous evolutionarily divergent pathogens ranging from parasites to viruses, with a large impact on public health. The protein is organized into three distinct domains: an N-terminal transmembrane domain, a tandem-repeat neck domain and C-type lectin carbohydrate recognition domain. The extracellular region consisting of the C-type lectin and neck domains has a dual function as a pathogen recognition receptor and a cell adhesion receptor by binding carbohydrate ligands on the surface of microbes and endogenous cells. The neck region is important for homo-oligomerization which allows the receptor to bind multivalent ligands with high avidity. Variations in the number of 23 amino acid repeats in the neck domain of this protein are common and have a significant impact on ligand binding ability. This gene is closely related in terms of both sequence and function to a neighboring gene (GeneID 30835; often referred to as DC-SIGN or CD209). DC-SIGN and L-SIGN differ in their ligand-binding properties and distribution. Alternative splicing results in multiple variants.[provided by RefSeq, Feb 2009]

 Tel: 1-631-559-9269 1-516-512-3133

 Email: info@creative-biomart.com  Fax: 1-631-938-8127

 45-1 Ramsey Road, Shirley, NY 11967, USA

Molecular Mass	37.84 kDa
AA Sequence	SQRNWHDSVTACQEVRAQLVVIKTAEEQNFLQLQTSRNRFSWMGLSDLNQEGT WQWVDGSPSPSFQRYWNSGEPNNSGNEDCAEFSGSGWNDNRCDVDNYWICKK PAA
Applications	Enzyme-linked Immunoabsorbent Assay Western Blot (Recombinant protein) Antibody Production Protein Array
Notes	Best use within three months from the date of receipt of this protein.
Storage	Store at -80 centigrade. Aliquot to avoid repeated freezing and thawing.
Storage Buffer	50 mM Tris-HCl, 10 mM reduced Glutathione, pH=8.0 in the elution buffer.

GENE INFORMATION

Gene Name	CLEC4M C-type lectin domain family 4, member M [Homo sapiens]
Official Symbol	CLEC4M
Synonyms	CLEC4M; C-type lectin domain family 4, member M; CD209L, CD299, CD299 antigen; C-type lectin domain family 4 member M; DC SIGN2; DC SIGNR; DCSIGNR; HP10347; LSIGN; CD299 antigen; DC-SIGN-related protein; CD209 antigen-like protein 1; mannose binding C-type lectin DC-SIGNR; dendritic cell-specific ICAM-3-grabbing non-integrin 2; liver/lymph node-specific ICAM-3 grabbing non-integrin; liver/lymph node-specific ICAM-3-grabbing non-integrin; CD299; CD209L; L-SIGN; DC-SIGN2; DC-SIGNR; MGC47866; MGC129964;

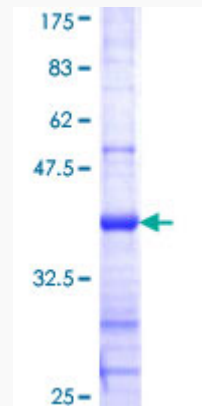
 Tel: 1-631-559-9269 1-516-512-3133

 Email: info@creative-biomart.com  Fax: 1-631-938-8127

 45-1 Ramsey Road, Shirley, NY 11967, USA

Gene ID	10332
mRNA Refseq	NM_001144904
Protein Refseq	NP_001138376
MIM	605872
UniProt ID	Q9H2X3

**Quality Control
Testing:**



12.5% SDS-PAGE Stained with Coomassie Blue.

 Tel: 1-631-559-9269 1-516-512-3133

 Email: info@creative-biomart.com  Fax: 1-631-938-8127

 45-1 Ramsey Road, Shirley, NY 11967, USA