

Recombinant Human CLEC5A protein, His-tagged

Cat. No. CLEC5A-11321H Lot. No. (See product label)

SPECIFICATION

Product Overview	Recombinant Human CLEC5A protein(32-188 aa), fused with N-terminal His tag, was expressed in E.coli.
Species	Human
Source	E.coli
ProteinLength	32-188 aa
Form	The purified protein was lyophilized from sterile phosphate-buffered saline (PBS: 58 mM Na ₂ HPO ₄ , 17 mM NaH ₂ PO ₄ , 68 mM NaCl, pH 7.4). Prior to lyophilization, 5% (w/v) trehalose and 5% (w/v) mannitol were incorporated as cryoprotective excipients. The protein was eluted with a buffer containing 300 mM imidazole.
AASequence	NKSNDGFTTTRS YGTVSQIFGSSSPNGFITTRS YGTVCPKDWEFYQARCFFLSTS ESSWNESRDFCKGKGSTLAI VNTPEK LKFLQDITDAEKYFIGLIYHREEKRWRWINNS VFNGNV TNQNQNFNCATIGLTKTFDAASCDISYRRICEKNAK
Purity	85%, by SDS-PAGE with Coomassie Brilliant Blue staining.
Storage	Store at 2-8°C for 1-2 weeks. Aliquot and store at -20°C to -80°C for up to 3 months, reconstitution with sterile water and addition of an equal volume of glycerol. Avoid repeat freeze-thaw cycles.
Reconstitution	Dissolve the product in 200 µl sterile water to achieve a working concentration of 0.25

 Tel: 1-631-559-9269 1-516-512-3133

 Email: info@creative-biomart.com  Fax: 1-631-938-8127

 45-1 Ramsey Road, Shirley, NY 11967, USA

g/μl. If experimental compatibility allows, mix the aqueous solution with an equal volume of glycerol (1:1 ratio) after initial reconstitution.

GENE INFORMATION

Gene Name	CLEC5A C-type lectin domain family 5, member A [Homo sapiens]
Official Symbol	CLEC5A
Synonyms	CLEC5A; C-type lectin domain family 5, member A; C type (calcium dependent, carbohydrate recognition domain) lectin, superfamily member 5 , CLECSF5; C-type lectin domain family 5 member A; MDL 1; C-type lectin superfamily member 5; myeloid DAP12-associating lectin 1; myeloid DAP12-associating lectin-1; C-type (calcium dependent, carbohydrate-recognition domain) lectin, superfamily member 5; MDL1; MDL-1; CLECSF5; MGC138304;
Gene ID	23601
mRNA Refseq	NM_013252
Protein Refseq	NP_037384
MIM	604987
UniProt ID	Q9NY25

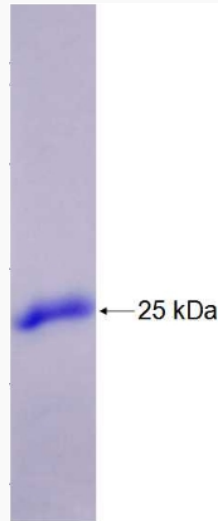
 Tel: 1-631-559-9269 1-516-512-3133

 Email: info@creative-biomart.com  Fax: 1-631-938-8127

 45-1 Ramsey Road, Shirley, NY 11967, USA



SDS-PAGE



☎ Tel: 1-631-559-9269 1-516-512-3133

☎ Email: info@creative-biomart.com ☎ Fax: 1-631-938-8127

☎ 45-1 Ramsey Road, Shirley, NY 11967, USA