

Recombinant Human CLEC5A Protein, GST-tagged

Cat. No. CLEC5A-1472H Lot. No. (See product label)

SPECIFICATION

Product Overview	Human CLEC5A full-length ORF (NP_037384.1, 1 a.a. - 188 a.a.) recombinant protein with GST-tag at N-terminal.
Species	Human
Source	Wheat Germ
Description	This gene encodes a member of the C-type lectin/C-type lectin-like domain (CTL/CTLD) superfamily. Members of this family share a common protein fold and have diverse functions, such as cell adhesion, cell-cell signalling, glycoprotein turnover, and roles in inflammation and immune response. The encoded type II transmembrane protein interacts with dnax-activation protein 12 and may play a role in cell activation. Alternative splice variants have been described but their full-length sequence has not been determined. [provided by RefSeq, Jul 2008]
Molecular Mass	47.9 kDa
AA Sequence	MNWHMIISGLIVVVLKVVGMTLFLLYFPQIFNKSNDFGFTTTRSYGTVSQIFGSSSPSP NGFITRTRSYGTVCPKDWEFYQARCFLLSTSESSWNESRDFCKGKGSTLAIVNTPEKL KFLQDITDAEKYFIGLIYHREEKRWRWINNSVFNGNVNQNQNFNCATIGLTKTFDAA SCDISYRRICEKNAK
Applications	Enzyme-linked Immunoabsorbent Assay Western Blot (Recombinant protein) Antibody Production

 Tel: 1-631-559-9269 1-516-512-3133

 Email: info@creative-biomart.com  Fax: 1-631-938-8127

 45-1 Ramsey Road, Shirley, NY 11967, USA

Protein Array

Notes	Best use within three months from the date of receipt of this protein.
Storage	Store at -80 centigrade. Aliquot to avoid repeated freezing and thawing.
Storage Buffer	50 mM Tris-HCl, 10 mM reduced Glutathione, pH=8.0 in the elution buffer.

GENE INFORMATION

Gene Name	CLEC5A C-type lectin domain family 5, member A [Homo sapiens]
Official Symbol	CLEC5A
Synonyms	CLEC5A; C-type lectin domain family 5, member A; C type (calcium dependent, carbohydrate recognition domain) lectin, superfamily member 5 , CLECSF5; C-type lectin domain family 5 member A; MDL 1; C-type lectin superfamily member 5; myeloid DAP12-associating lectin 1; myeloid DAP12-associating lectin-1; C-type (calcium dependent, carbohydrate-recognition domain) lectin, superfamily member 5; MDL1; MDL-1; CLECSF5; MGC138304;
Gene ID	23601
mRNA Refseq	NM_013252
Protein Refseq	NP_037384
MIM	604987
UniProt ID	Q9NY25

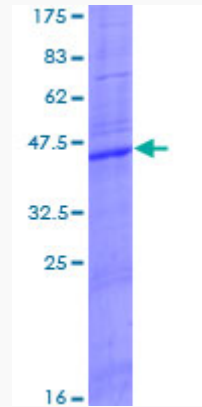
 Tel: 1-631-559-9269 1-516-512-3133

 Email: info@creative-biomart.com  Fax: 1-631-938-8127

 45-1 Ramsey Road, Shirley, NY 11967, USA

Quality Control

Testing:



12.5% SDS-PAGE Stained with Coomassie Blue.

 Tel: 1-631-559-9269 1-516-512-3133

 Email: info@creative-biomart.com  Fax: 1-631-938-8127

 45-1 Ramsey Road, Shirley, NY 11967, USA