

# Recombinant Human CLEC5A Protein, 28-188aa, C-His tagged

Cat. No. CLEC5A-20H Lot. No. (See product label)

## SPECIFICATION

<b>Product Overview</b>	Recombinant human CLEC5A protein (28-188aa), fused to His-tag at C-terminus, was expressed in insect cell and purified by using conventional chromatography techniques was expressed in Baculovirus.
<b>Species</b>	Human
<b>Source</b>	Insect Cells
<b>ProteinLength</b>	28-188aa
<b>Description</b>	This gene encodes a member of the C-type lectin/C-type lectin-like domain (CTL/CTLD) superfamily. Members of this family share a common protein fold and have diverse functions, such as cell adhesion, cell-cell signalling, glycoprotein turnover, and roles in inflammation and immune response. The encoded type II transmembrane protein interacts with dnax-activation protein 12 and may play a role in cell activation. Alternative splice variants have been described but their full-length sequence has not been determined.
<b>Form</b>	Liquid
<b>Molecular Mass</b>	19.5 kDa (170aa)
<b>AA Sequence</b>	ADLPQIFNKSNLDGFTTTRSYGTVSQIFGSSSPNGFITTRSYGTVCPKDWEFYQAR CFFLSTSESSWNESRDFCKGKGSTLAIVNTPEKLFKFLQDITDAEKYFIGLIYHREEKR WRWINNSVFNGNVNQNQNFNCATIGLTKTFDAASCDISYRRICEKNAKHHHHHH

 Tel: 1-631-559-9269 1-516-512-3133

 Email: [info@creative-biomart.com](mailto:info@creative-biomart.com)  Fax: 1-631-938-8127

 45-1 Ramsey Road, Shirley, NY 11967, USA

<b>Endotoxin</b>	< 1 EU/μg of protein (determined by LAL method)
<b>Purity</b>	> 90 % by SDS-PAGE
<b>Applications</b>	SDS-PAGE
<b>Notes</b>	For research use only. This product is not intended or approved for human, diagnostics or veterinary use.
<b>Storage</b>	Can be stored at +2 to +8 centigrade for 1 week. For long term storage, aliquot and store at -20 to -80 centigrade. Avoid repeated freezing and thawing cycles.
<b>Concentration</b>	0.25 mg/mL (determined by absorbance at 280nm)
<b>Storage Buffer</b>	Phosphate-Buffered Saline (pH 7.4) containing 20 % glycerol, 1mM DTT

## GENE INFORMATION

<b>Gene Name</b>	CLEC5A C-type lectin domain family 5, member A [ Homo sapiens (human) ]
<b>Official Symbol</b>	CLEC5A
<b>Synonyms</b>	CLEC5A; C-type lectin domain family 5, member A; C type (calcium dependent, carbohydrate recognition domain) lectin, superfamily member 5 , CLECSF5; C-type lectin domain family 5 member A; MDL 1; C-type lectin superfamily member 5; myeloid DAP12-associating lectin 1; myeloid DAP12-associating lectin-1; C-type (calcium dependent, carbohydrate-recognition domain) lectin, superfamily member 5; MDL1; MDL-1; CLECSF5; MGC138304
<b>Gene ID</b>	23601

 Tel: 1-631-559-9269 1-516-512-3133

 Email: [info@creative-biomart.com](mailto:info@creative-biomart.com)  Fax: 1-631-938-8127

 45-1 Ramsey Road, Shirley, NY 11967, USA

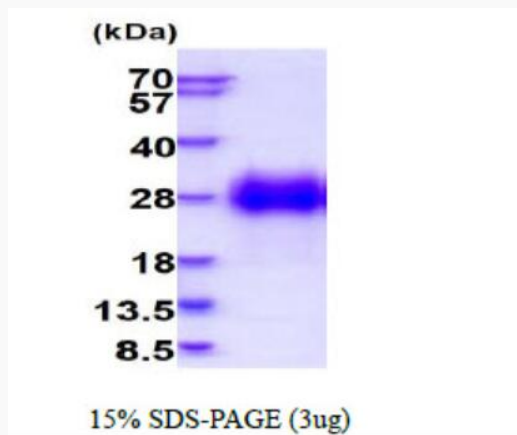
mRNA Refseq [NM\\_013252](#)

Protein Refseq [NP\\_037384](#)

MIM [604987](#)

UniProt ID [Q9NY25](#)

SDS-PAGE



 Tel: 1-631-559-9269 1-516-512-3133

 Email: [info@creative-biomart.com](mailto:info@creative-biomart.com)  Fax: 1-631-938-8127

 45-1 Ramsey Road, Shirley, NY 11967, USA