

Recombinant Human CLEC5A protein, hFc-tagged

Cat. No. CLEC5A-6345H Lot. No. (See product label)

SPECIFICATION

Product Overview	Recombinant Human CLEC5A protein(Q9NY25-1)(Tyr26-Lys188), fused with N-terminal hFc tag, was expressed in HEK293.
Species	Human
Source	HEK293
ProteinLength	Tyr26-Lys188
Tag	N-hFc
Form	Lyophilized from 0.22µm filtered solution in PBS (pH 7.4). Normally 8% trehalose is added as protectant before lyophilization.
Bio-activity	Immobilized Human MDL-1, hFc Tag at 1ug/ml (100ul/well) on the plate. Dose response curve for Biotinylated Anti-MDL-1 Antibody, hFc Tag with the EC50 of 10.3ng/ml determined by ELISA.
Molecular Mass	The protein has a predicted MW of 46 kDa. Due to glycosylation, the protein migrates to 63-70 kDa based on Tris-Bis PAGE result.
Endotoxin	Less than 1EU per µg by the LAL method.
Purity	> 95% as determined by Tris-Bis PAGE;> 95% as determined by HPLC

 Tel: 1-631-559-9269 1-516-512-3133

 Email: info@creative-biomart.com  Fax: 1-631-938-8127

 45-1 Ramsey Road, Shirley, NY 11967, USA

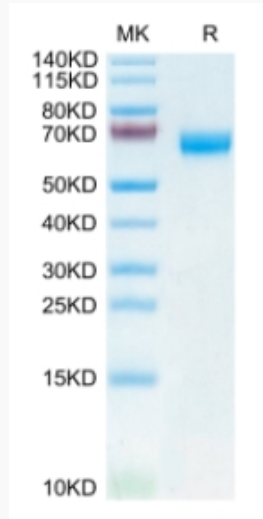
Storage	Reconstituted protein stable at -80°C for 12 months, 4°C for 1 week. Use a manual defrost freezer and avoid repeated freeze-thaw cycles.
Reconstitution	Centrifuge tubes before opening. Reconstituting to a concentration more than 100 µg/ml is recommended. Dissolve the lyophilized protein in distilled water.
GENE INFORMATION	
Gene Name	CLEC5A C-type lectin domain family 5, member A [Homo sapiens]
Official Symbol	CLEC5A
Synonyms	CLEC5A; C-type lectin domain family 5, member A; C type (calcium dependent, carbohydrate recognition domain) lectin, superfamily member 5 , CLECSF5; C-type lectin domain family 5 member A; MDL 1; C-type lectin superfamily member 5; myeloid DAP12-associating lectin 1; myeloid DAP12-associating lectin-1; C-type (calcium dependent, carbohydrate-recognition domain) lectin, superfamily member 5; MDL1; MDL-1; CLECSF5; MGC138304;
Gene ID	23601
mRNA Refseq	NM_013252
Protein Refseq	NP_037384
MIM	604987
UniProt ID	Q9NY25

 Tel: 1-631-559-9269 1-516-512-3133

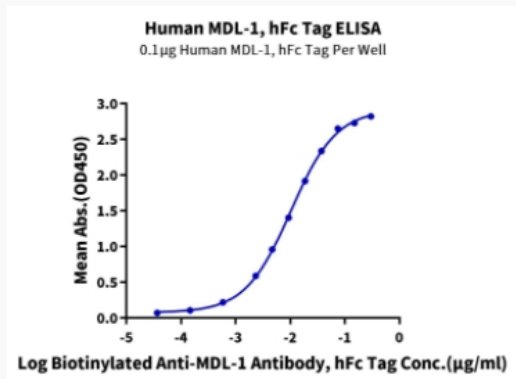
 Email: info@creative-biomart.com  Fax: 1-631-938-8127

 45-1 Ramsey Road, Shirley, NY 11967, USA

Tris-Bis PAGE



ELISA Data



 Tel: 1-631-559-9269 1-516-512-3133

 Email: info@creative-biomart.com  Fax: 1-631-938-8127

 45-1 Ramsey Road, Shirley, NY 11967, USA