

Recombinant Human CLEC6A protein, hFc-tagged

Cat. No. CLEC6A-8528H Lot. No. (See product label)

SPECIFICATION

Product Overview	Recombinant Human CLEC6A protein(NP_001007034) (Thr 42-Leu209) was expressed in HEK293, fused with the Fc region of human IgG1 at the N-terminus.
Species	Human
Source	HEK293
ProteinLength	42-209 aa
Form	Lyophilized from sterile PBS, pH 7.4.
Molecular Mass	The recombinant human DECTIN2 /Fc comprises 428 amino acids and has a predicted molecular mass of 47.9 kDa. The apparent molecular mass of the protein is approximately 52 kDa in SDS-PAGE under reducing conditions.
Endotoxin	< 1 EU/g as determined by LAL test.
Purity	> 80 % as determined by SDS-PAGE
Storage	Store it under sterile conditions at -20°C to -80°C upon receiving. Recommend to aliquot the protein into smaller quantities for optimal storage. Avoid repeated freeze-thaw cycles.
Reconstitution	It is recommended that sterile water be added to the vial to prepare a stock solution of 0.2 ug/ul. Centrifuge the vial at 4°C before opening to recover the entire contents.

 Tel: 1-631-559-9269 1-516-512-3133

 Email: info@creative-biomart.com  Fax: 1-631-938-8127

 45-1 Ramsey Road, Shirley, NY 11967, USA

GENE INFORMATION

Gene Name [CLEC6A C-type lectin domain family 6, member A \[Homo sapiens \]](#)

Official Symbol [CLEC6A](#)

Synonyms [CLEC6A](#); C-type lectin domain family 6, member A; C type (calcium dependent, carbohydrate recognition domain) lectin, superfamily member 10 , [CLECSF10](#); C-type lectin domain family 6 member A; [dectin 2](#); [dectin-2](#); DC-associated C-type lectin 2; C-type lectin superfamily member 10; dendritic cell-associated C-type lectin 2; C-type (calcium dependent, carbohydrate-recognition domain) lectin, superfamily member 10; [CLEC4N](#); [CLECSF10](#);

Gene ID [93978](#)

mRNA Refseq [NM_001007033](#)

Protein Refseq [NP_001007034](#)

MIM [613579](#)

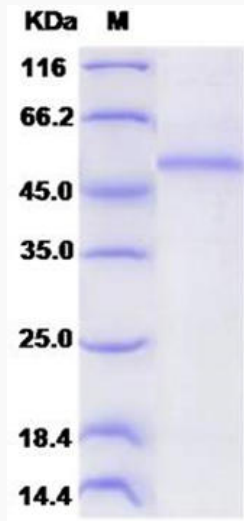
UniProt ID [Q6EIG7](#)

 Tel: 1-631-559-9269 1-516-512-3133

 Email: info@creative-biomart.com  Fax: 1-631-938-8127

 45-1 Ramsey Road, Shirley, NY 11967, USA

SDS-PAGE



 Tel: 1-631-559-9269 1-516-512-3133

 Email: info@creative-biomart.com  Fax: 1-631-938-8127

 45-1 Ramsey Road, Shirley, NY 11967, USA