

Recombinant Human CLEC6A protein, His-tagged

Cat. No. CLEC6A-8529H Lot. No. (See product label)

SPECIFICATION

Product Overview	Recombinant Human CLEC6A protein(Thr42-Leu209), fused with C-terminal His tag, was expressed in HEK293.
Species	Human
Source	HEK293
ProteinLength	Thr42-Leu209
Tag	C-His
Form	Liquid in sterile PBS, pH7.4, 10% Glycerol, 8% Trehalose.
Molecular Mass	The protein has a calculated MW of 21 kDa.
Endotoxin	<1.0EU per 1µg (determined by the LAL method).
Purity	> 90 % as determined by SDS-PAGE.
Storage	Store it under sterile conditions at -80°C. It is recommended that the protein be aliquoted for optimal storage. Avoid repeated freeze-thaw cycles.
Concentration	1.0 mg/ml. Centrifuge the vial at 4°C before opening to recover the entire contents.
Reconstitution	It is recommended that sterile water be added to the vial to prepare a stock solution of

 Tel: 1-631-559-9269 1-516-512-3133

 Email: info@creative-biomart.com  Fax: 1-631-938-8127

 45-1 Ramsey Road, Shirley, NY 11967, USA

0.2 ug/ul. Centrifuge the vial at 4°C before opening to recover the entire contents.

AA Sequence

TYHFTYGETGKRLSELHSYHSSLTCFSEGTKVPAWGCCPASWKSFGSSCYFISSEE
 KVWSKSEQNCVEMGAHLVVFNTEAEQNFIVQQLNESFSYFLGLSDPQGNNNWQWI
 DKTPYEKNVRFWHLGEPNHSAEQCASIVFWKPTGWGWNDVICETRRNSICEMNKIY
 LAHHHHHHHHHHH

GENE INFORMATION

Gene Name [CLEC6A C-type lectin domain family 6, member A \[Homo sapiens \]](#)

Official Symbol [CLEC6A](#)

Synonyms CLEC6A; C-type lectin domain family 6, member A; C type (calcium dependent, carbohydrate recognition domain) lectin, superfamily member 10 , CLECSF10; C-type lectin domain family 6 member A; dectin 2; dectin-2; DC-associated C-type lectin 2; C-type lectin superfamily member 10; dendritic cell-associated C-type lectin 2; C-type (calcium dependent, carbohydrate-recognition domain) lectin, superfamily member 10; CLEC4N; CLECSF10;

Gene ID [93978](#)

mRNA Refseq [NM_001007033](#)

Protein Refseq [NP_001007034](#)

MIM [613579](#)

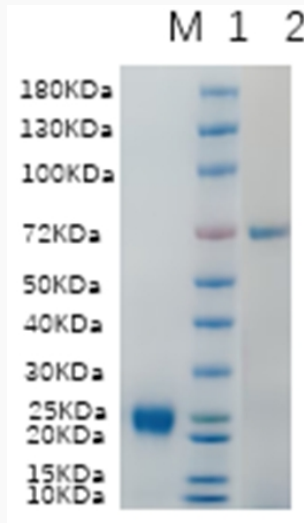
UniProt ID [Q6EIG7](#)

 Tel: 1-631-559-9269 1-516-512-3133

 Email: info@creative-biomart.com  Fax: 1-631-938-8127

 45-1 Ramsey Road, Shirley, NY 11967, USA

SDS-PAGE



Lane 1: CLEC6A-8529H; Lane 2: BSA

 Tel: 1-631-559-9269 1-516-512-3133

 Email: info@creative-biomart.com  Fax: 1-631-938-8127

 45-1 Ramsey Road, Shirley, NY 11967, USA