

Recombinant Human CLEC7A Protein, His-tagged

Cat. No. CLEC7A-131H Lot. No. (See product label)

SPECIFICATION

Product Overview	Recombinant Human CLEC7A Protein with His tag was expressed in E. coli.
Species	Human
Source	E.coli
Description	Dectin-1 is a C-type lectin receptor expressed by macrophages, monocytes, dendritic cells, neutrophils, and a subset of $\gamma\delta$ T cells. Dectin-1 is a glycoprotein with eight different isoforms, generated through alternative splicing. It plays an important role in anti-fungal immunity by acting as a pattern recognition receptor for β -glucans found on the cell wall of fungi and some bacteria. Dectin-1 is composed of a short amino-terminal cytoplasmic domain containing an ITAM-like motif, a transmembrane domain, and an extracellular carboxy-terminal C-type lectin domain. Dectin-1 recognizes β -glucans through its C-type lectin domain and transduces signals through its ITAM-like motif by recruiting and activating Syk. Dendritic cells activated through Dectin-1 promote differentiation of Th17 cells by producing IL-6 and IL-23.
Molecular Mass	~21 kDa
AA Sequence	TMAIWRNSNGSNTLENGYFLSRNKENHSQPTQSSLEDSVTPTKAVKTTGVLSSPCP PNWIIYEKSCYLFMSLNSWDGSKRQCWQLGSNLLKIDSSNELGFIVKQVSSQPDN SFWIGLSRPQTEVPWLWEDGSTFSSNLFQIRTTATQENPSPNCVWIHVSVIYDQLCS VPSYSICEKKFSM

 Tel: 1-631-559-9269 1-516-512-3133

 Email: info@creative-biomart.com  Fax: 1-631-938-8127

 45-1 Ramsey Road, Shirley, NY 11967, USA

Purity	Transferred into competent cells and the supernatant was purified by NI column affinity chromatography and the purity is > 85% (by SDS-PAGE).
Notes	For research use only, not for use in diagnostic procedure.
Storage	Store at 4 centigrade short term. Aliquot and store at -20 centigrade long term. Avoid freeze-thaw cycles.
Concentration	≥0.5 mg/mL
Storage Buffer	PBS, 4M Urea, pH7.4

GENE INFORMATION

Gene Name	CLEC7A C-type lectin domain family 7, member A [Homo sapiens (human)]
Official Symbol	CLEC7A
Synonyms	CLEC7A; C-type lectin domain family 7, member A; C type (calcium dependent, carbohydrate recognition domain) lectin, superfamily member 12 , CLECSF12; C-type lectin domain family 7 member A; dectin 1; hDectin 1; dectin-1; beta-glucan receptor; lectin-like receptor 1; DC-associated C-type lectin 1; C-type lectin superfamily member 12; dendritic cell-associated C-type lectin 1; dendritic cell-associated C-type lectin-1; C-type (calcium dependent, carbohydrate-recognition domain) lectin, superfamily member 12; BGR; CANDF4; DECTIN1; CLECSF12;
Gene ID	64581
mRNA Refseq	NM_022570
Protein Refseq	NP_072092

 Tel: 1-631-559-9269 1-516-512-3133

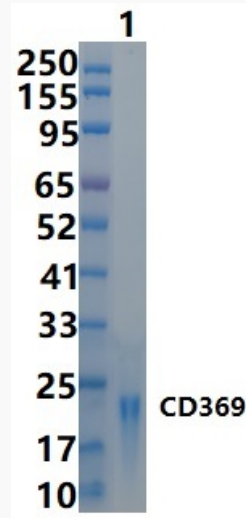
 Email: info@creative-biomart.com  Fax: 1-631-938-8127

 45-1 Ramsey Road, Shirley, NY 11967, USA

MIM 606264

UniProt ID Q9BXN2

SDS-PAGE



 Tel: 1-631-559-9269 1-516-512-3133

 Email: info@creative-biomart.com  Fax: 1-631-938-8127

 45-1 Ramsey Road, Shirley, NY 11967, USA