

Recombinant Mouse CLEC7A protein, hFc-tagged

Cat. No. CLEC7A-1691M Lot. No. (See product label)

SPECIFICATION

Product Overview	Recombinant Mouse CLEC7A protein(Q6QLQ4)(Gly71-Leu244), fused with N-terminal hFc tag, was expressed in HEK293.
Species	Mouse
Source	N-hFc
ProteinLength	Gly71-Leu244
Tag	N-hFc
Form	Lyophilized from 0.22µm filtered solution in PBS (pH 7.4). Normally 8% trehalose is added as protectant before lyophilization.
Bio-activity	
Molecular Mass	The protein has a predicted MW of 46.08 kDa. Due to glycosylation, the protein migrates to 55-65 kDa based on Tris-Bis PAGE result.
Endotoxin	Less than 1EU per µg by the LAL method.
Purity	> 95% as determined by Tris-Bis PAGE; > 95% as determined by HPLC.
Storage	Reconstituted protein stable at -80°C for 12 months, 4°C for 1 week. Use a manual defrost freezer and avoid repeated freeze-thaw cycles.

 Tel: 1-631-559-9269 1-516-512-3133

 Email: info@creative-biomart.com  Fax: 1-631-938-8127

 45-1 Ramsey Road, Shirley, NY 11967, USA

Reconstitution Centrifuge tubes before opening. Reconstituting to a concentration more than 100 µg/ml is recommended. Dissolve the lyophilized protein in distilled water.

GENE INFORMATION

Gene Name [Clec7a C-type lectin domain family 7, member a \[Mus musculus \]](#)

Official Symbol [CLEC7A](#)

Synonyms CLEC7A; C-type lectin domain family 7, member a; C-type lectin domain family 7 member A; dectin-1; beta-glucan receptor; DC-associated C-type lectin 1; C-type lectin superfamily member 12; dendritic cell-associated C-type lectin 1; C-type (calcium dependent, carbohydrate recognition domain) lectin, superfamily member 12; BGR; beta-GR; Clecsf12;

Gene ID [56644](#)

mRNA Refseq [NM_020008](#)

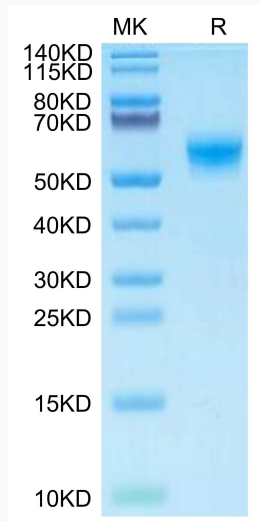
Protein Refseq [NP_064392](#)

 Tel: 1-631-559-9269 1-516-512-3133

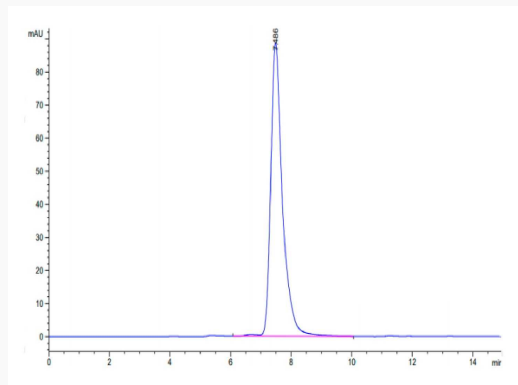
 Email: info@creative-biomart.com  Fax: 1-631-938-8127

 45-1 Ramsey Road, Shirley, NY 11967, USA

Tris-Bis PAGE



SEC-HPLC



 Tel: 1-631-559-9269 1-516-512-3133

 Email: info@creative-biomart.com  Fax: 1-631-938-8127

 45-1 Ramsey Road, Shirley, NY 11967, USA