

Recombinant Human CLEC7A protein, hFc-tagged

Cat. No. CLEC7A-1697H **Lot. No.** (See product label)

SPECIFICATION

Product Overview	Recombinant Human CLEC7A protein(Q9BXN2-2)(Thr66-Met201), fused with N-terminal hFc tag, was expressed in HEK293.
Species	Human
Source	N-hFc
ProteinLength	Thr66-Met201
Tag	N-hFc
Form	Supplied as 0.22µm filtered solution in PBS (pH 7.4).
Molecular Mass	The protein has a predicted MW of 41.79 kDa. Due to glycosylation, the protein migrates to 45-50 kDa based on Tris-Bis PAGE result.
Endotoxin	Less than 1EU per µg by the LAL method.
Purity	> 95% as determined by Tris-Bis PAGE; > 95% as determined by HPLC.
Storage	Valid for 12 months from date of receipt when stored at -80°C.; Recommend to aliquot the protein into smaller quantities for optimal storage. Please do not repeated freeze-thaw cycles.
Reconstitution	It is recommended that sterile water be added to the vial to prepare a stock solution of

 Tel: 1-631-559-9269 1-516-512-3133

 Email: info@creative-biomart.com  Fax: 1-631-938-8127

 45-1 Ramsey Road, Shirley, NY 11967, USA

0.2 ug/ul. Centrifuge the vial at 4°C before opening to recover the entire contents.

GENE INFORMATION

Gene Name [CLEC7A C-type lectin domain family 7, member A \[Homo sapiens \]](#)

Official Symbol [CLEC7A](#)

Synonyms CLEC7A; C-type lectin domain family 7, member A; C type (calcium dependent, carbohydrate recognition domain) lectin, superfamily member 12 , CLECSF12; C-type lectin domain family 7 member A; dectin 1; hDectin 1; dectin-1; beta-glucan receptor; lectin-like receptor 1; DC-associated C-type lectin 1; C-type lectin superfamily member 12; dendritic cell-associated C-type lectin 1; dendritic cell-associated C-type lectin-1; C-type (calcium dependent, carbohydrate-recognition domain) lectin, superfamily member 12; BGR; CANDF4; DECTIN1; CLECSF12;

Gene ID [64581](#)

mRNA Refseq [NM_022570](#)

Protein Refseq [NP_072092](#)

MIM [606264](#)

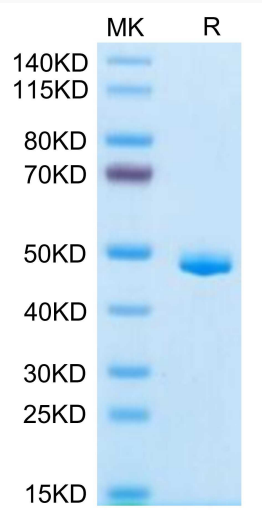
UniProt ID [Q9BXN2](#)

 Tel: 1-631-559-9269 1-516-512-3133

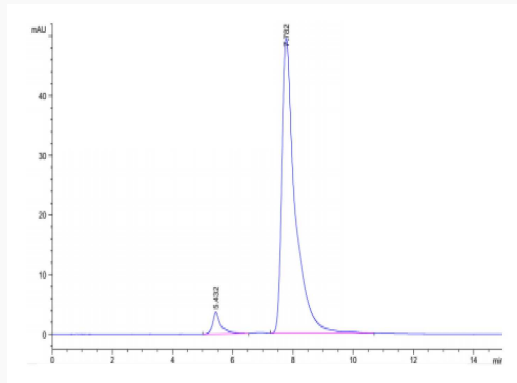
 Email: info@creative-biomart.com  Fax: 1-631-938-8127

 45-1 Ramsey Road, Shirley, NY 11967, USA

Tris-Bis PAGE



SEC-HPLC



 Tel: 1-631-559-9269 1-516-512-3133

 Email: info@creative-biomart.com  Fax: 1-631-938-8127

 45-1 Ramsey Road, Shirley, NY 11967, USA