

## Recombinant Human CLEC7A, Fc-tagged

Cat. No. CLEC7A-261H Lot. No. (See product label)

### SPECIFICATION

<b>Product Overview</b>	Recombinant Human CLEC7A(NP_072092.2) (Thr 66- Met201) was expressed in HEK293 with the Fc region of human IgG1 at the N-terminus.
<b>Species</b>	Human
<b>Source</b>	HEK293
<b>ProteinLength</b>	66-201 aa
<b>Form</b>	Lyophilized from sterile PBS, pH 7.4, 5% Glycerol.
<b>Molecular Mass</b>	The recombinant human Dectin1/Fc comprises 373 amino acids and has a predicted molecular mass of 42.1 kDa. The apparent molecular mass of the protein is approximately 44 kDa in SDS-PAGE under reducing conditions.
<b>Endotoxin</b>	< 1 EU/g as determined by LAL test.
<b>Purity</b>	> 85 % as determined by SDS-PAGE
<b>Storage</b>	Store it under sterile conditions at -20°C to -80°C upon receiving. Recommend to aliquot the protein into smaller quantities for optimal storage. Avoid repeated freeze-thaw cycles.
<b>Reconstitution</b>	It is recommended that sterile water be added to the vial to prepare a stock solution of 0.2 ug/ul. Centrifuge the vial at 4°C before opening to recover the entire contents.

 Tel: 1-631-559-9269 1-516-512-3133

 Email: [info@creative-biomart.com](mailto:info@creative-biomart.com)  Fax: 1-631-938-8127

 45-1 Ramsey Road, Shirley, NY 11967, USA

## GENE INFORMATION

**Gene Name** CLEC7A C-type lectin domain family 7, member A [ Homo sapiens ]

**Official Symbol** CLEC7A

**Synonyms** CLEC7A; C-type lectin domain family 7, member A; C type (calcium dependent, carbohydrate recognition domain) lectin, superfamily member 12 , CLECSF12; C-type lectin domain family 7 member A; dectin 1; hDectin 1; dectin-1; beta-glucan receptor; lectin-like receptor 1; DC-associated C-type lectin 1; C-type lectin superfamily member 12; dendritic cell-associated C-type lectin 1; dendritic cell-associated C-type lectin-1; C-type (calcium dependent, carbohydrate-recognition domain) lectin, superfamily member 12; BGR; CANDF4; DECTIN1; CLECSF12;

**Gene ID** 64581

**mRNA Refseq** NM\_022570

**Protein Refseq** NP\_072092

**MIM** 606264

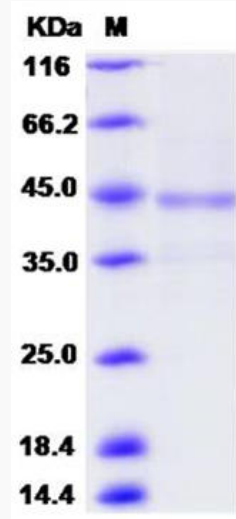
**UniProt ID** Q9BXN2


 Tel: 1-631-559-9269 1-516-512-3133

 Email: [info@creative-biomart.com](mailto:info@creative-biomart.com)  Fax: 1-631-938-8127

 45-1 Ramsey Road, Shirley, NY 11967, USA

**SDS-PAGE**



 Tel: 1-631-559-9269 1-516-512-3133

 Email: [info@creative-biomart.com](mailto:info@creative-biomart.com)  Fax: 1-631-938-8127

 45-1 Ramsey Road, Shirley, NY 11967, USA