

Recombinant Human CLEC7A protein, rFc-tagged

Cat. No. CLEC7A-3792H **Lot. No.** (See product label)

SPECIFICATION

Product Overview	Recombinant Human CLEC7A protein(Q9BXN2-1)(Thr66-Met247), fused with N-terminal rFc tag, was expressed in HEK293.
Species	Human
Source	HEK293
Form	Lyophilized from 0.22 µm filtered solution in PBS, pH 7.4. Normally 5% trehalose and 5% mannitol are added as protectants before lyophilization.
Molecular Mass	47.7 kDa
Endotoxin	<0.1 EU/µg protein, LAL method
Purity	>90 %, SDS-PAGE >90 %, SEC-HPLC
Storage	It is recommended that the protein be aliquoted for optimal storage. Avoid repeated freeze-thaw cycles. Until expiry date, -20°C to -80°C as lyophilized proteins. 3 months, -20°C to -80°C under sterile conditions after reconstitution.
Reconstitution	Briefly centrifuge the tube before opening. Reconstitute at 0.1-0.5 mg/mL in sterile water.

GENE INFORMATION

 Tel: 1-631-559-9269 1-516-512-3133

 Email: info@creative-biomart.com  Fax: 1-631-938-8127

 45-1 Ramsey Road, Shirley, NY 11967, USA

Gene Name	CLEC7A C-type lectin domain family 7, member A [Homo sapiens]
Official Symbol	CLEC7A
Synonyms	CLEC7A; C-type lectin domain family 7, member A; C type (calcium dependent, carbohydrate recognition domain) lectin, superfamily member 12 , CLECSF12; C-type lectin domain family 7 member A; dectin 1; hDectin 1; dectin-1; beta-glucan receptor; lectin-like receptor 1; DC-associated C-type lectin 1; C-type lectin superfamily member 12; dendritic cell-associated C-type lectin 1; dendritic cell-associated C-type lectin-1; C-type (calcium dependent, carbohydrate-recognition domain) lectin, superfamily member 12; BGR; CANDF4; DECTIN1; CLECSF12;
Gene ID	64581
mRNA Refseq	NM_022570
Protein Refseq	NP_072092
MIM	606264
UniProt ID	Q9BXN2

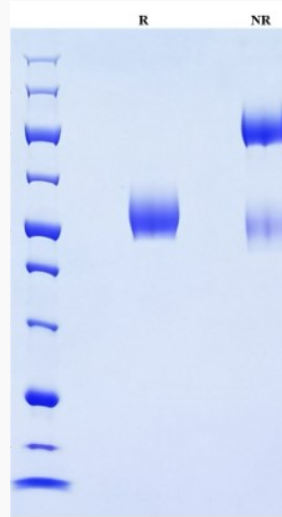
 Tel: 1-631-559-9269 1-516-512-3133

 Email: info@creative-biomart.com  Fax: 1-631-938-8127

 45-1 Ramsey Road, Shirley, NY 11967, USA



SDS-PAGE



Tel: 1-631-559-9269 1-516-512-3133

Email: info@creative-biomart.com Fax: 1-631-938-8127

45-1 Ramsey Road, Shirley, NY 11967, USA