

## Recombinant Human CLIC1 Protein, GST-tagged

**Cat. No.** CLIC1-1477H    **Lot. No.** (See product label)

### SPECIFICATION

<b>Product Overview</b>	Human CLIC1 full-length ORF ( AAH64527.1, 1 a.a. - 241 a.a.) recombinant protein with GST-tag at N-terminal.
<b>Species</b>	Human
<b>Source</b>	Wheat Germ
<b>Description</b>	Chloride channels are a diverse group of proteins that regulate fundamental cellular processes including stabilization of cell membrane potential, transepithelial transport, maintenance of intracellular pH, and regulation of cell volume. Chloride intracellular channel 1 is a member of the p64 family; the protein localizes principally to the cell nucleus and exhibits both nuclear and plasma membrane chloride ion channel activity. [provided by RefSeq, Jul 2008]
<b>Molecular Mass</b>	52.25 kDa
<b>AA Sequence</b>	MAEEQPQVELFVKAGSDGAKIGNCPFSQRLFMVLWLKGVTFNVTTVDTKRRRETETVQ KLCPPGGQLPFLLYGTEVHTDTNKIEEFLEAVLCPPRYPKLAALNPESNTAGLDIFAKF SAYIKNSSPALNDNLEKGLLKALKVLDNYLTSPLPEEVDETSAEDEGVSRKFLDGN ELTLADCNLLPKLHIVQVVCKKYRGFTIPEAFRGVHRYLSNAYAREEFACPDDEEI ELAYEQVAKALK
<b>Applications</b>	Enzyme-linked Immunoabsorbent Assay Western Blot (Recombinant protein) Antibody Production

 Tel: 1-631-559-9269    1-516-512-3133

 Email: [info@creative-biomart.com](mailto:info@creative-biomart.com)     Fax: 1-631-938-8127

 45-1 Ramsey Road, Shirley, NY 11967, USA

	Protein Array
<b>Notes</b>	Best use within three months from the date of receipt of this protein.
<b>Storage</b>	Store at -80 centigrade. Aliquot to avoid repeated freezing and thawing.
<b>Storage Buffer</b>	50 mM Tris-HCl, 10 mM reduced Glutathione, pH=8.0 in the elution buffer.
<b>GENE INFORMATION</b>	
<b>Gene Name</b>	CLIC1 chloride intracellular channel 1 [ Homo sapiens ]
<b>Official Symbol</b>	CLIC1
<b>Synonyms</b>	CLIC1; chloride intracellular channel 1; chloride intracellular channel protein 1; NCC27; p64CLCP; hRNCC; RNCC protein; chloride channel ABP; nuclear chloride ion channel 27; nuclear chloride ion channel protein; regulatory nuclear chloride ion channel protein; G6;
<b>Gene ID</b>	1192
<b>mRNA Refseq</b>	NM_001288
<b>Protein Refseq</b>	NP_001279
<b>MIM</b>	602872
<b>UniProt ID</b>	O00299

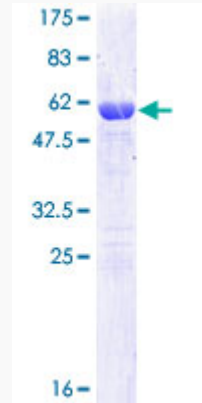
 Tel: 1-631-559-9269 1-516-512-3133

 Email: [info@creative-biomart.com](mailto:info@creative-biomart.com)  Fax: 1-631-938-8127

 45-1 Ramsey Road, Shirley, NY 11967, USA

**Quality Control**

**Testing:**



12.5% SDS-PAGE Stained with Coomassie Blue.

 Tel: 1-631-559-9269 1-516-512-3133

 Email: [info@creative-biomart.com](mailto:info@creative-biomart.com)  Fax: 1-631-938-8127

 45-1 Ramsey Road, Shirley, NY 11967, USA