

Recombinant Human Chloride Intracellular Channel 1, His-tagged

Cat. No. CLIC1-2498H **Lot. No.** (See product label)

SPECIFICATION

Product Overview	Recombinant human CLIC1 protein, fused to His-tag at N-terminus, was expressed in <i>E.coli</i> and purified by using conventional chromatography techniques. MW = 29.0 kDa (261aa).
Species	Human
Source	E.coli
Description	CLIC1 (Chloride intracellular channel 1), also referred to as NCC27, is a member of the highly conserved family of chloride ion channels that function in both soluble and integral membrane forms. This protein is a monomeric protein that contains a redox-active site similar to glutaredoxin; it functions as an anion-selective channel. It forms a dimer when oxidized and is then able to form chloride ion channels in bilayers and vesicles, whereas a reducing environment prevents this from occurring.
Form	Liquid. 20mM Tris-HCl buffer (pH8.0) containing 10% glycerol 0.1M NaCl.
Purity	> 90% by SDS – PAGE.
Concentration	1.0 mg/ml (determined by Bradford assay).
Sequences Of Amino Acids	MGSSHHHHHH SSGLVPRGSH MAEEQPQVEL FVKAGSDGAK IGNCPFSQRL FMVLWLKGVTFNVTVDTKR RTETVQKLCP GGQLPFLLYG TEVHTDTNKI EEFLEAVLCP PRYPKLAALN PESNTAGLDI FAKFSAYIKN SNPALNDNLE

 Tel: 1-631-559-9269 1-516-512-3133

 Email: info@creative-biomart.com  Fax: 1-631-938-8127

 45-1 Ramsey Road, Shirley, NY 11967, USA

KGLLKALKVL DNYLTSPLPE EVDE TSAEDE GVSQRKFLDG NELTLADCNL
 LPKLHIVQVV CKKYRGFTIP EAFRGVHRYL SNAYAREEFA STCPDDEEIE
 LAYEQVAKAL K.

Storage

can be stored at +4°C short term (1-2 weeks). For long term storage, aliquot and store at -20°C or -70°C. Avoid repeated freezing and thawing cycles.

GENE INFORMATION
Gene Name

[CLIC1 chloride intracellular channel 1 \[Homo sapiens \]](#)

Synonyms

chloride intracellular channel 1; G6; NCC27; CLIC1; chloride intracellular channel protein 1; hRNCC; p64CLCP; RNCC protein; OTTHUMP00000029133; OTTHUMP00000029137; OTTHUMP00000174486; chloride channel ABP; nuclear chloride ion channel 27; nuclear chloride ion channel protein; regulatory nuclear chloride ion channel protein; Chloride channel ABP; Nuclear chloride ion channel 27; Regulatory nuclear chloride ion channel protein

Gene ID

[1192](#)

mRNA Refseq

[NM_001288](#)

Protein Refseq

[NP_001279](#)

MIM

[602872](#)

UniProt ID

[O00299](#)

Chromosome
Location

6p22.1-p21.2

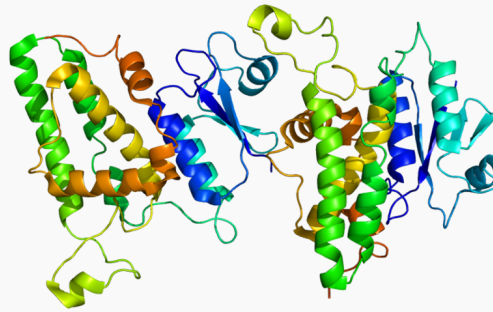
 Tel: 1-631-559-9269 1-516-512-3133

 Email: info@creative-biomart.com  Fax: 1-631-938-8127

 45-1 Ramsey Road, Shirley, NY 11967, USA

Function

chloride channel activity; protein binding; voltage-gated chloride channel activity;
voltage-gated ion channel activity

**PDB rendering based
on 1k0m.**

☎ Tel: 1-631-559-9269 1-516-512-3133

☎ Email: info@creative-biomart.com ☎ Fax: 1-631-938-8127

☎ 45-1 Ramsey Road, Shirley, NY 11967, USA