

Recombinant Human CLIC2 Protein, GST-tagged

Cat. No. CLIC2-1478H Lot. No. (See product label)

SPECIFICATION

Product Overview	Human CLIC2 full-length ORF (AAH22305, 1 a.a. - 247 a.a.) recombinant protein with GST-tag at N-terminal.
Species	Human
Source	Wheat Germ
Description	This gene encodes a chloride intracellular channel protein. Chloride channels are a diverse group of proteins that regulate fundamental cellular processes including stabilization of cell membrane potential, transepithelial transport, maintenance of intracellular pH, and regulation of cell volume. This protein plays a role in inhibiting the function of ryanodine receptor 2. A mutation in this gene is the cause of an X-linked form of cognitive disability. [provided by RefSeq, Jul 2017]
Molecular Mass	52.91 kDa
AA Sequence	MSGLRPGTQVDPEIELFVKAGSDGESIGNCPFCQRLFMILWLKGVKFNVTTVDMTR KPEELKDLAPGTNPPFLVYNKELKTDIFIKIEEFLEQTLAPPRYPHLSPKYKESFDVGC NLFAKFSAYIKNTQKEANKNFEKSLKKEFKRLDDYLNTPLLDEIDPDSAEPPVSRRL FLDGDQLTLADCSLLPKLNITKVAACKYRDFDIPAEFSGVWRYLHNAYAREEFTHTC PEDKEIENTYANVAKQKS
Applications	Enzyme-linked Immunoabsorbent Assay Western Blot (Recombinant protein) Antibody Production

 Tel: 1-631-559-9269 1-516-512-3133

 Email: info@creative-biomart.com  Fax: 1-631-938-8127

 45-1 Ramsey Road, Shirley, NY 11967, USA

	Protein Array
Notes	Best use within three months from the date of receipt of this protein.
Storage	Store at -80 centigrade. Aliquot to avoid repeated freezing and thawing.
Storage Buffer	50 mM Tris-HCl, 10 mM reduced Glutathione, pH=8.0 in the elution buffer.
GENE INFORMATION	
Gene Name	CLIC2 chloride intracellular channel 2 [Homo sapiens]
Official Symbol	CLIC2
Synonyms	CLIC2; chloride intracellular channel 2; chloride intracellular channel protein 2; XAP121; CLIC2b;
Gene ID	1193
mRNA Refseq	NM_001289
Protein Refseq	NP_001280
MIM	300138
UniProt ID	O15247

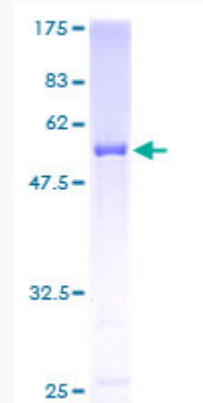
 Tel: 1-631-559-9269 1-516-512-3133

 Email: info@creative-biomart.com  Fax: 1-631-938-8127

 45-1 Ramsey Road, Shirley, NY 11967, USA

Quality Control

Testing:



12.5% SDS-PAGE Stained with Coomassie Blue.

 Tel: 1-631-559-9269 1-516-512-3133

 Email: info@creative-biomart.com  Fax: 1-631-938-8127

 45-1 Ramsey Road, Shirley, NY 11967, USA