

Recombinant Human CLIC2 Protein, Myc/DDK-tagged, C13 and N15-labeled

Cat. No. CLIC2-3907H **Lot. No.** (See product label)

SPECIFICATION

Product Overview	CLIC2 MS Standard C13 and N15-labeled recombinant protein (NP_001280) with a C-terminal MYC/DDK tag, was expressed in HEK293 cells.
Species	Human
Source	HEK293
Description	This gene encodes a chloride intracellular channel protein. Chloride channels are a diverse group of proteins that regulate fundamental cellular processes including stabilization of cell membrane potential, transepithelial transport, maintenance of intracellular pH, and regulation of cell volume. This protein plays a role in inhibiting the function of ryanodine receptor 2. A mutation in this gene is the cause of an X-linked form of cognitive disability.
Molecular Mass	28.4 kDa
AA Sequence	MSGLRPGTQVDPEIELFVKAGSDGESIGNCPFCQRLFMILWLKGVKFNVTVDMTR KPEELKDLAPGTNPPFLVYNKELKTDFFIKIEEFLEQTLAPPRYPHLSPKYKESFDVGC NLFAKFSAYIKNTQKEANKNFEKSLLEKFKRLDDYLNTPLLDEIDPDSAEPPVSRRL FLDGDQLTLADCSLLPKLNIIKVAACKYRDFDIPAEFSGVWRYLHNAYAREEFTHTCP EDKEIENTYANVAKQKSTRTRPLEQKLISEEDLAANDILDYKDDDDKV
Purity	> 80% as determined by SDS-PAGE and Coomassie blue staining

 Tel: 1-631-559-9269 1-516-512-3133

 Email: info@creative-biomart.com  Fax: 1-631-938-8127

 45-1 Ramsey Road, Shirley, NY 11967, USA

Stability	Stable for 3 months from receipt of products under proper storage and handling conditions.
Storage	Store at -80 centigrade. Avoid repeated freeze-thaw cycles.
Concentration	50 µg/mL as determined by BCA
Storage Buffer	100 mM glycine, 25 mM Tris-HCl, pH 7.3.

GENE INFORMATION

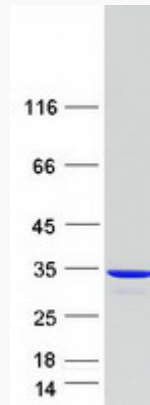
Gene Name	CLIC2 chloride intracellular channel 2 [Homo sapiens (human)]
Official Symbol	CLIC2
Synonyms	CLIC2; chloride intracellular channel 2; chloride intracellular channel protein 2; XAP121; CLIC2b;
Gene ID	1193
mRNA Refseq	NM_001289
Protein Refseq	NP_001280
MIM	300138
UniProt ID	O15247

 Tel: 1-631-559-9269 1-516-512-3133

 Email: info@creative-biomart.com  Fax: 1-631-938-8127

 45-1 Ramsey Road, Shirley, NY 11967, USA

SDS-PAGE



 Tel: 1-631-559-9269 1-516-512-3133

 Email: info@creative-biomart.com  Fax: 1-631-938-8127

 45-1 Ramsey Road, Shirley, NY 11967, USA