

Active Recombinant Full Length Human CLIC2 Protein, C-Flag-tagged

Cat. No. CLIC2-403HFL **Lot. No.** (See product label)

SPECIFICATION

Product Overview	Recombinant Full Length Human CLIC2 Protein, fused to Flag-tag at C-terminus, was expressed in Mammalian cells.
Species	Human
Source	Mammalian Cells
Description	This gene encodes a chloride intracellular channel protein. Chloride channels are a diverse group of proteins that regulate fundamental cellular processes including stabilization of cell membrane potential, transepithelial transport, maintenance of intracellular pH, and regulation of cell volume. This protein plays a role in inhibiting the function of ryanodine receptor 2. A mutation in this gene is the cause of an X-linked form of cognitive disability.
Form	25 mM Tris HCl, pH 7.3, 100 mM glycine, 10% glycerol.
Bio-activity	ELISA capture for autoantibodies
Molecular Mass	28.2 kDa
AA Sequence	MSGLRPGTQVDPEIELFVKAGSDGESIGNCPFCQRLFMILWLKGVKFNVTTVDMTR KPEELKDLAPGTNP PFLVYNKELKTDFFIKIEEFLEQTLAPPRYPHLSPKYKESFDVGC NLFAKFSAYIKNTQKEANKNFEKSLLL KEFKRLDDYLNTPLLDEIDPDSAEPPVSRRL FLDGDQLTLADCSLLPKLNIIKVAACKYRDFDIPAEFS

 Tel: 1-631-559-9269 1-516-512-3133

 Email: info@creative-biomart.com  Fax: 1-631-938-8127

 45-1 Ramsey Road, Shirley, NY 11967, USA

GVWRYLHNAYAREEFTHTCPEDKEIENTYANVAKQKSTRTRPLEQKLISEEDLAAND
ILDYKDDDDKV

Purity	> 80% as determined by SDS-PAGE and Coomassie blue staining.
Stability	Stable for 12 months from the date of receipt of the product under proper storage and handling conditions. Avoid repeated freeze-thaw cycles.
Storage	Store at -80 centigrade.
Concentration	>50 ug/mL as determined by microplate BCA method.
Preparation	Recombinant protein was captured through anti-DDK affinity column followed by conventional chromatography steps.
Protein Families	Druggable Genome, Ion Channels: Other
Full Length	Full L.

GENE INFORMATION

Gene Name	CLIC2 chloride intracellular channel 2 [Homo sapiens (human)]
Official Symbol	CLIC2
Synonyms	CLCNL2; CLIC2b; MRXS32; XAP121
Gene ID	1193
mRNA Refseq	NM_001289.6

 Tel: 1-631-559-9269 1-516-512-3133

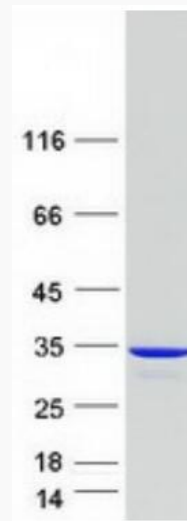
 Email: info@creative-biomart.com  Fax: 1-631-938-8127

 45-1 Ramsey Road, Shirley, NY 11967, USA

Protein Refseq NP_001280.3

MIM 300138

UniProt ID O15247



Coomassie blue staining of purified CLIC2 protein.

 Tel: 1-631-559-9269 1-516-512-3133

 Email: info@creative-biomart.com  Fax: 1-631-938-8127

 45-1 Ramsey Road, Shirley, NY 11967, USA