

Active Recombinant Human CLK1 Protein, GST-His-tagged

Cat. No. CLK1-1490H Lot. No. (See product label)

SPECIFICATION

Product Overview	Human CLK1 (NM_004071.2, 1 a.a. - 484 a.a.) full-length recombinant protein with GST-His tag expressed in Sf9 cells.
Species	Human
Source	Insect Cells
Description	<p>This gene encodes a member of the CDC2-like (or LAMMER) family of dual specificity protein kinases. In the nucleus, the encoded protein phosphorylates serine/arginine-rich proteins involved in pre-mRNA processing, releasing them into the nucleoplasm. The choice of splice sites during pre-mRNA processing may be regulated by the concentration of transacting factors, including serine/arginine rich proteins. Therefore, the encoded protein may play an indirect role in governing splice site selection. Multiple transcript variants encoding different isoforms have been found for this gene. [provided by RefSeq, Jun 2009]</p>
Form	Liquid
Bio-activity	0.4 pmol/μg x min
Molecular Mass	86.695 kDa
Applications	Functional Study SDS-PAGE

 Tel: 1-631-559-9269 1-516-512-3133

 Email: info@creative-biomart.com  Fax: 1-631-938-8127

 45-1 Ramsey Road, Shirley, NY 11967, USA

Storage	Store at -80 centigrade. Aliquot to avoid repeated freezing and thawing.
Concentration	0.139 µg/µL
Storage Buffer	In 50 mM Tris-HCl, 100 mM NaCl, pH 8.0. (5 mM DTT, 4 mM reduced glutathione, 20% glycerol)

GENE INFORMATION

Gene Name	CLK1 CDC-like kinase 1 [Homo sapiens]
Official Symbol	CLK1
Synonyms	CLK1; CDC-like kinase 1; dual specificity protein kinase CLK1; CDC28/CDC2-like kinase; protein tyrosine kinase STY; CLK; STY; CLK/STY;
Gene ID	1195
mRNA Refseq	NM_001162407
Protein Refseq	NP_001155879
MIM	601951
UniProt ID	P49759

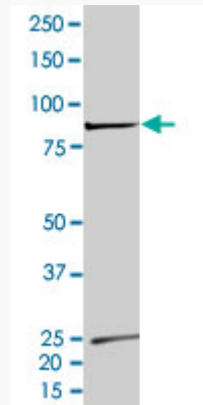
 Tel: 1-631-559-9269 1-516-512-3133

 Email: info@creative-biomart.com  Fax: 1-631-938-8127

 45-1 Ramsey Road, Shirley, NY 11967, USA

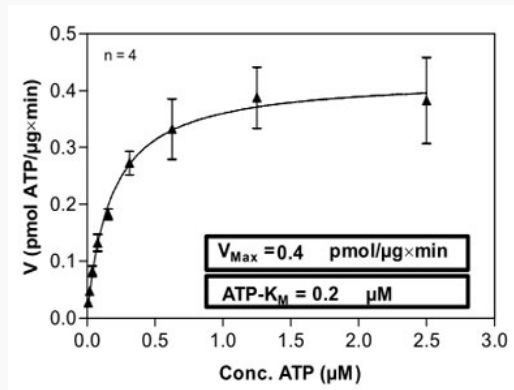
Quality Control

Testing:



2 µg/lane SDS-PAGE Stained with Coomassie Blue

Result of activity analysis



Tel: 1-631-559-9269 1-516-512-3133

Email: info@creative-biomart.com Fax: 1-631-938-8127

45-1 Ramsey Road, Shirley, NY 11967, USA