

## Recombinant Human CLK1 Protein, GST-tagged

Cat. No. CLK1-1491H Lot. No. (See product label)

### SPECIFICATION

<b>Product Overview</b>	Human CLK1 full-length ORF ( NP_004062.2, 1 a.a. - 484 a.a.) recombinant protein with GST-tag at N-terminal.
<b>Species</b>	Human
<b>Source</b>	Wheat Germ
<b>Description</b>	<p>This gene encodes a member of the CDC2-like (or LAMMER) family of dual specificity protein kinases. In the nucleus, the encoded protein phosphorylates serine/arginine-rich proteins involved in pre-mRNA processing, releasing them into the nucleoplasm. The choice of splice sites during pre-mRNA processing may be regulated by the concentration of transacting factors, including serine/arginine rich proteins. Therefore, the encoded protein may play an indirect role in governing splice site selection. Multiple transcript variants encoding different isoforms have been found for this gene. [provided by RefSeq, Jun 2009]</p>
<b>Molecular Mass</b>	83.7 kDa
<b>AA Sequence</b>	<pre>MRHSKRTYCPDWDDKDWDYGKWRSSSSHKRRKRSHSSAQENKRCKYNHSKMCD SHYLESRSINEKDYHSRRYIDEYRNDYTQGCEPGHRQRDHESTRYQNHSSKSSGRS GRSSYKSKHRIHHSTSHRRSHGKSHRRKRTRSVEDDEEGHLCQSGDVLSARYEIV DTLGEGAFGKVVCEIDHKAGGRHVAVKIVKNVDRYCEAARSEIQVLEHLNTTDPNST FRCVQMLEWFEEHHGHICIVFELLGLSTYDFIKENGLFPFRLDHIRKMAYQICKSVNFL HSNKLTHTDLKPENILFVQSDYTEAYNPKIKRDERTLINPDIKVDFGSATYDDEHHS</pre>

 Tel: 1-631-559-9269 1-516-512-3133

 Email: [info@creative-biomart.com](mailto:info@creative-biomart.com)  Fax: 1-631-938-8127

 45-1 Ramsey Road, Shirley, NY 11967, USA

TLVSTRHYRAPEVILALGWSQPCDVWSIGCILIEYYLGFTVFPTHDSKEHLAMMERIL  
 GPLPKHMIQKTRKRKYFHHDRLDWDEHSSAGRYVSRCKPLKEFMLSQDVEHERL  
 FDLIQKMLEYDPAKRITLREALKHPFFDLLKCSI

<b>Applications</b>	Enzyme-linked Immunoabsorbent Assay Western Blot (Recombinant protein) Antibody Production Protein Array
<b>Notes</b>	Best use within three months from the date of receipt of this protein.
<b>Storage</b>	Store at -80 centigrade. Aliquot to avoid repeated freezing and thawing.
<b>Storage Buffer</b>	50 mM Tris-HCl, 10 mM reduced Glutathione, pH=8.0 in the elution buffer.

## GENE INFORMATION

<b>Gene Name</b>	CLK1 CDC-like kinase 1 [ Homo sapiens ]
<b>Official Symbol</b>	CLK1
<b>Synonyms</b>	CLK1; CDC-like kinase 1; dual specificity protein kinase CLK1; CDC28/CDC2-like kinase; protein tyrosine kinase STY; CLK; STY; CLK/STY;
<b>Gene ID</b>	1195
<b>mRNA Refseq</b>	NM_001162407
<b>Protein Refseq</b>	NP_001155879
<b>MIM</b>	601951

 Tel: 1-631-559-9269 1-516-512-3133

 Email: [info@creative-biomart.com](mailto:info@creative-biomart.com)  Fax: 1-631-938-8127

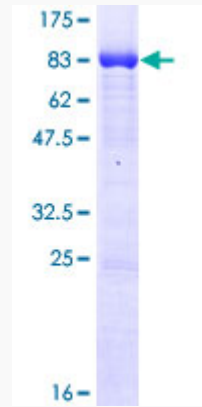
 45-1 Ramsey Road, Shirley, NY 11967, USA

UniProt ID

P49759

Quality Control

Testing:



12.5% SDS-PAGE Stained with Coomassie Blue.

 Tel: 1-631-559-9269 1-516-512-3133

 Email: [info@creative-biomart.com](mailto:info@creative-biomart.com)  Fax: 1-631-938-8127

 45-1 Ramsey Road, Shirley, NY 11967, USA