

## Active Recombinant Human CLK2 Protein, GST-tagged

Cat. No. CLK2-1493H Lot. No. (See product label)

### SPECIFICATION

<b>Product Overview</b>	Human CLK2 (AAH53603.1, 1 a.a. - 499 a.a.) full-length recombinant protein with GST tag expressed in baculovirus infected Sf21 cells.
<b>Species</b>	Human
<b>Source</b>	Insect Cells
<b>Description</b>	<p>This gene encodes a dual specificity protein kinase that phosphorylates serine/threonine and tyrosine-containing substrates. Activity of this protein regulates serine- and arginine-rich (SR) proteins of the spliceosomal complex, thereby influencing alternative transcript splicing. Chromosomal translocations have been characterized between this locus and the PAFAH1B3 (platelet-activating factor acetylhydrolase 1b, catalytic subunit 3 (29kDa)) gene on chromosome 19, resulting in the production of a fusion protein. Note that this gene is distinct from the TELO2 gene (GeneID:9894), which shares the CLK2 alias, but encodes a protein that is involved in telomere length regulation. There is a pseudogene for this gene on chromosome 7. Alternative splicing results in multiple transcript variants. [provided by RefSeq, Jun 2014]</p>
<b>Form</b>	Liquid
<b>Bio-activity</b>	The activity was measured by off-chip mobility shift assay. The enzyme was incubated with fluorescence-labeled substrate and Mg(or Mn)/ATP. The phosphorylated and unphosphorylated substrates were separated and detected by

 Tel: 1-631-559-9269 1-516-512-3133

 Email: [info@creative-biomart.com](mailto:info@creative-biomart.com)  Fax: 1-631-938-8127

 45-1 Ramsey Road, Shirley, NY 11967, USA

LabChip 3000. Substrate: DYRKtide-F. ATP: 100 uM.

<b>Molecular Mass</b>	87 kDa
<b>Purity</b>	69 % by SDS-PAGE/CBB staining
<b>Applications</b>	Functional Study SDS-PAGE
<b>Storage</b>	Store at -80 centigrade. Aliquot to avoid repeated freezing and thawing.
<b>Storage Buffer</b>	In 50 mM Tris-HCl, 150 mM NaCl, pH 7.5 (0.1% CHAPS, 1 mM DTT, 10% glycerol)

## GENE INFORMATION

<b>Gene Name</b>	<a href="#">CLK2 CDC-like kinase 2 [ Homo sapiens ]</a>
<b>Official Symbol</b>	<a href="#">CLK2</a>
<b>Synonyms</b>	CLK2; CDC-like kinase 2; dual specificity protein kinase CLK2; clk2; CLK kinase; hCLK2; MGC61500;
<b>Gene ID</b>	<a href="#">1196</a>
<b>mRNA Refseq</b>	<a href="#">NM_003993</a>
<b>Protein Refseq</b>	<a href="#">NP_003984</a>
<b>MIM</b>	<a href="#">602989</a>
<b>UniProt ID</b>	<a href="#">P49760</a>

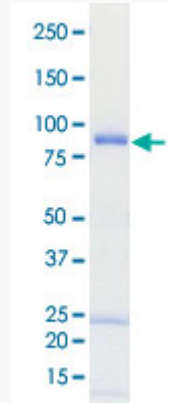
 Tel: 1-631-559-9269 1-516-512-3133

 Email: [info@creative-biomart.com](mailto:info@creative-biomart.com)  Fax: 1-631-938-8127

 45-1 Ramsey Road, Shirley, NY 11967, USA

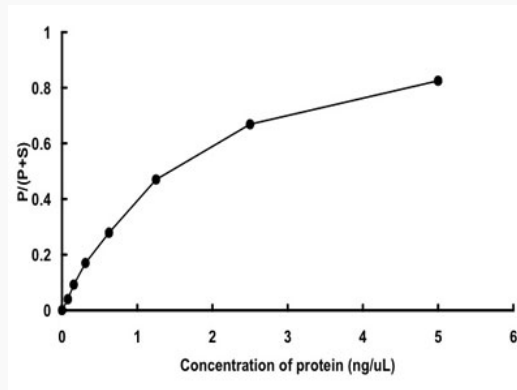
**Quality Control**

**Testing:**



Loading 1  $\mu$ g protein in SDS-PAGE

**Result of activity analysis**



 Tel: 1-631-559-9269 1-516-512-3133

 Email: [info@creative-biomart.com](mailto:info@creative-biomart.com)  Fax: 1-631-938-8127

 45-1 Ramsey Road, Shirley, NY 11967, USA