

Recombinant Human CLK2 Protein, GST-tagged

Cat. No. CLK2-1494H Lot. No. (See product label)

SPECIFICATION

Product Overview	Human CLK2 full-length ORF (AAH14067, 1 a.a. - 498 a.a.) recombinant protein with GST-tag at N-terminal.
Species	Human
Source	Wheat Germ
Description	<p>This gene encodes a dual specificity protein kinase that phosphorylates serine/threonine and tyrosine-containing substrates. Activity of this protein regulates serine- and arginine-rich (SR) proteins of the spliceosomal complex, thereby influencing alternative transcript splicing. Chromosomal translocations have been characterized between this locus and the PAFAH1B3 (platelet-activating factor acetylhydrolase 1b, catalytic subunit 3 (29kDa)) gene on chromosome 19, resulting in the production of a fusion protein. Note that this gene is distinct from the TELO2 gene (GeneID:9894), which shares the CLK2 alias, but encodes a protein that is involved in telomere length regulation. There is a pseudogene for this gene on chromosome 7. Alternative splicing results in multiple transcript variants. [provided by RefSeq, Jun 2014]</p>
Molecular Mass	80.52 kDa
AA Sequence	<p>MPHPRRYHSSERGSRGSYREHYRSRKHKRRRSRSWSSSSDRTRRRRRREDSYHVR SRSSYDDRSSDRRVYDRRYCGSYRRNDYSRDRGDAYYDTDYRHSYEQRENSSY RSQRSSRRKHRRRRRRSRTFSRSSSHSSRRAKSVEDDAEGHLYHVGDWLQERYE</p>

 Tel: 1-631-559-9269 1-516-512-3133

 Email: info@creative-biomart.com  Fax: 1-631-938-8127

 45-1 Ramsey Road, Shirley, NY 11967, USA

IVSTLGEGTFGRVVQCVDHRRGGARVALKIIKNVEKYKEAARLEINVLEKINEKDPDN
 KNLCVQMFDWFDYHGHMCISFELLGLSTDFDLKDNNYLPYPIHQVRHMAFQLCQAV
 KFLHDNKLTHTDLKPENILFVNSDYELTYNLEKKRDERSVKSTAVRVVDFGSATFDH
 EHHSTIVSTRHYRAPEVILELGWSQPCDVWSIGCIIFEYYVGFRLFQTHDNREHLAM
 MERILGPIPSRMIRKTRKQKYFYRGRLDWDENTSAGRYVRENCKPLRRYLTSEAE
 HHQLFDLIESMLEYEPARLTLGEALQHPFFARLRAEPPNKLWDSSRDISR

Applications	Kinase Assay enlarge Enzyme-linked Immunoabsorbent Assay Western Blot (Recombinant protein) Antibody Production Protein Array
Notes	Best use within three months from the date of receipt of this protein.
Storage	Store at -80 centigrade. Aliquot to avoid repeated freezing and thawing.
Storage Buffer	50 mM Tris-HCl, 10 mM reduced Glutathione, pH=8.0 in the elution buffer.

GENE INFORMATION

Gene Name	CLK2 CDC-like kinase 2 [Homo sapiens]
Official Symbol	CLK2
Synonyms	CLK2; CDC-like kinase 2; dual specificity protein kinase CLK2; clk2; CLK kinase; hCLK2; MGC61500;
Gene ID	1196
mRNA Refseq	NM_003993

 Tel: 1-631-559-9269 1-516-512-3133

 Email: info@creative-biomart.com  Fax: 1-631-938-8127

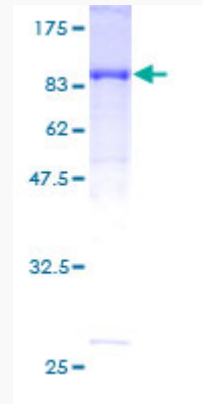
 45-1 Ramsey Road, Shirley, NY 11967, USA

Protein Refseq NP_003984

MIM 602989

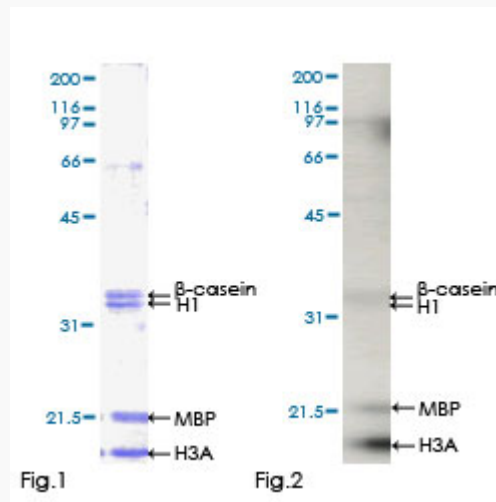
UniProt ID P49760

Quality Control Testing:



12.5% SDS-PAGE Stained with Coomassie Blue.

Kinase Assay



Tel: 1-631-559-9269 1-516-512-3133

Email: info@creative-biomart.com Fax: 1-631-938-8127

45-1 Ramsey Road, Shirley, NY 11967, USA