

Recombinant Human CLNS1A Protein, GST-tagged

Cat. No. CLNS1A-1509H **Lot. No.** (See product label)

SPECIFICATION

Product Overview	Human CLNS1A full-length ORF (NP_001284, 1 a.a. - 237 a.a.) recombinant protein with GST-tag at N-terminal.
Species	Human
Source	Wheat Germ
Description	This gene encodes a protein that functions in multiple regulatory pathways. The encoded protein complexes with numerous cytosolic proteins and performs diverse functions including regulation of small nuclear ribonucleoprotein biosynthesis, platelet activation and cytoskeletal organization. The protein is also found associated with the plasma membrane where it functions as a chloride current regulator. Pseudogenes of this gene are found on chromosomes 1, 4 and 6. Several transcript variants encoding different isoforms have been found for this gene. [provided by RefSeq, Jul 2015]
Molecular Mass	51.7 kDa
AA Sequence	MSFLKSFPPPGPAEGLLRQQPDTEAVLNGKGLGTGTLYIAESRLSWLDGSGGLGFSL EYPTISLHALSRDRSDCLGEHLYVMVNAKFEEESKEPVADEEEEDSDDDVEPITEFR FVPSDKSALEAMFTAMCECQALHPDPEDESDDDYDGEEYDVEAHEQQGGDIPTFY TYEGLSHLTAEGQATLERLEGMLSQSVSSQYNMAGVRTEDSIRDYEDGMEVDTP TVAGQFEDADVVDH
Applications	Enzyme-linked Immunoabsorbent Assay Western Blot (Recombinant protein)

 Tel: 1-631-559-9269 1-516-512-3133

 Email: info@creative-biomart.com  Fax: 1-631-938-8127

 45-1 Ramsey Road, Shirley, NY 11967, USA

	Antibody Production Protein Array
Notes	Best use within three months from the date of receipt of this protein.
Storage	Store at -80 centigrade. Aliquot to avoid repeated freezing and thawing.
Storage Buffer	50 mM Tris-HCl, 10 mM reduced Glutathione, pH=8.0 in the elution buffer.
GENE INFORMATION	
Gene Name	CLNS1A chloride channel, nucleotide-sensitive, 1A [Homo sapiens]
Official Symbol	CLNS1A
Synonyms	CLNS1A; chloride channel, nucleotide-sensitive, 1A; CLCI; methylosome subunit pICln; ICln; i(Cln); reticulocyte pICln; reticulocyte protein ICln; chloride channel regulatory protein; chloride ion current inducer protein; chloride channel, nucleotide sensitive 1A; chloride conductance regulatory protein ICln; CLNS1B;
Gene ID	1207
mRNA Refseq	NM_001293
Protein Refseq	NP_001284
MIM	602158
UniProt ID	P54105

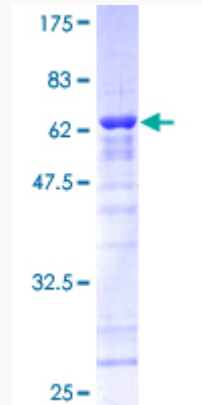
 Tel: 1-631-559-9269 1-516-512-3133

 Email: info@creative-biomart.com  Fax: 1-631-938-8127

 45-1 Ramsey Road, Shirley, NY 11967, USA

Quality Control

Testing:



12.5% SDS-PAGE Stained with Coomassie Blue.

 Tel: 1-631-559-9269 1-516-512-3133

 Email: info@creative-biomart.com  Fax: 1-631-938-8127

 45-1 Ramsey Road, Shirley, NY 11967, USA