

Recombinant Clostridium Botulinum CLPP Protein (1-194 aa), His-SUMO-tagged

Cat. No. CLPP-1971C **Lot. No.** (See product label)

SPECIFICATION

Product Overview	Recombinant Clostridium Botulinum (strain Hall/ATCC 3502/NCTC 13319/Type A) CLPP Protein (1-194 aa) is produced by E. coli expression system. This protein is fused with a 6xHis-SUMO tag at the N-terminal. Research Area: Microbiology. Protein Description: Full Length.
Species	Clostridium Botulinum
Source	E.coli
ProteinLength	1-194 aa
Description	Cleaves peptides in various proteins in a process that requires ATP hydrolysis. Has a chymotrypsin-like activity. Plays a major role in the degradation of misfolded proteins. Hydrolysis of proteins to small peptides in the presence of ATP and magnesium. Alpha-casein is the usual test substrate. In the absence of ATP, only oligopeptides shorter than five residues are hydrolyzed (such as succinyl-Leu-Tyr- -NHMeC; and Leu-Tyr-Leu- -Tyr-Trp, in which cleavage of the -Tyr- -Leu- and -Tyr- -Trp bonds also occurs).
Form	Tris-based buffer,50% glycerol
Molecular Mass	37.5 kDa
AA Sequence	MSLVPVVVEQTNRGERSYDIYSRLLKDRIMLSEEVNDTTASLIVAQLLFLEAEDPKD

 Tel: 1-631-559-9269 1-516-512-3133

 Email: info@creative-biomart.com  Fax: 1-631-938-8127

 45-1 Ramsey Road, Shirley, NY 11967, USA

IHLYINSPGGSSITSGMAIYDTMQYIKPDVSTICVGMAASMGAFLLAAGAKGKRYALPN
SEVMIHQPLGGFRGQATDIGIHAERILKMKKKLNILSDRTGKPLEQVELDTERDHFL
SAEEAKEYGLIDEVIDKKK

Purity > 90% as determined by SDS-PAGE.

Notes Repeated freezing and thawing is not recommended. Store working aliquots at 4 centigrade for up to one week.

Storage The shelf life is related to many factors, storage state, buffer ingredients, storage temperature and the stability of the protein itself. Generally, the shelf life of liquid form is 6 months at -20 centigrade/-80 centigrade. The shelf life of lyophilized form is 12 months at -20 centigrade/-80 centigrade.

Concentration A hardcopy of COA with reconstitution instruction is sent along with the products.

GENE INFORMATION

Gene Name [clpP ATP-dependent Clp protease proteolytic subunit \[Clostridium botulinum A str. ATCC 3502 \]](#)

Official Symbol [CLPP](#)

Synonyms clpP; Endopeptidase Clp;

Gene ID [5187372](#)

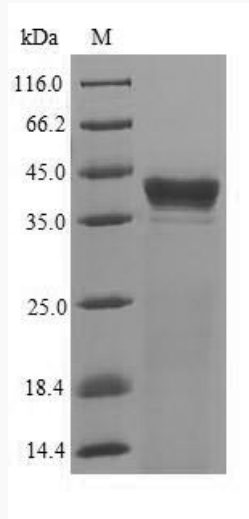
Protein Refseq [YP_001255721](#)

UniProt ID [A5I6W1](#)

 Tel: 1-631-559-9269 1-516-512-3133

 Email: info@creative-biomart.com  Fax: 1-631-938-8127

 45-1 Ramsey Road, Shirley, NY 11967, USA



(Tris-Glycine gel) Discontinuous SDS-PAGE (reduced) with 5% enrichment gel and 15% separation gel.

 Tel: 1-631-559-9269 1-516-512-3133

 Email: info@creative-biomart.com  Fax: 1-631-938-8127

 45-1 Ramsey Road, Shirley, NY 11967, USA