

Recombinant Human CLPP, His-tagged

Cat. No. CLPP-3538H **Lot. No.** (See product label)

SPECIFICATION

Product Overview	Recombinant human CLPP protein was expressed in E. coli and purified by using conventional chromatography techniques.
Species	Human
Source	Human
Description	CLPP belongs to the peptidase family S14. CLPP cleaves peptides in various proteins in a process that requires ATP hydrolysis. CLPP, the catalytic core of the Clp proteolytic complex, is widely involved in many cellular processes via the regulation of intracellular protein quality. CLPP may be responsible for a fairly general and central housekeeping function rather than for the degradation of specific substrates.
Application	SDS-PAGE
Form	Liquid. In 20mM Tris-HCl buffer (pH 8.0) containing 2mM DTT, 20% glycerol, 200mM NaCl.
Molecular Weight	24.2 kDa (222aa), confirmed by MALDI-TOF
Purity	> 90% by SDS-PAGE
Concentration	0.5 mg/ml (determined by Bradford assay)
Sequences of	MPLIPIVVEQTGRGERAYDI YSRLLRERIV CVMGPIDDSV ASLVIAQLLF

 Tel: 1-631-559-9269 1-516-512-3133

 Email: info@creative-biomart.com  Fax: 1-631-938-8127

 45-1 Ramsey Road, Shirley, NY 11967, USA

aminoacids LQSESNKKPI HMYINSPGGV VTAGLAIYDTMQYILNPICT WCVGQAASMG
 SLLLAAGTPG MRHSLPNSRI MIHQPSGGAR GQATDIAIQA
 EEIMKLLKQLYNIYAKHTKQ SLQVIESAME RDRYMSPMEA QEFGILDKVL
 VHPPQDGEDE PTLVQKEPVE AAPAAEPVPAST

Storage Can bestored at +4°C short term (1-2 weeks). For long term storage, aliquot andstore at -20°C or -70°C. Avoid repeated freezing and thawing cycles.

OfficialSymbol CLPP

GENE INFORMATION

Gene Name [CLPP ClpP caseinolyticpeptidase, ATP-dependent, proteolytic subunit homolog \(E. coli\) \[Homosapiens \]](#)

Synonyms CLPP; ClpPcaseinolytic peptidase, ATP-dependent, proteolytic subunit homolog (E. coli);putative ATP-dependent Clp protease proteolytic;subunit, mitochondrial; endopeptidase Clp; ATP-dependent protease ClpAP,proteolytic subunit, human; ClpP caseinolytic peptidase ATP-dependent,proteolytic subunit; ClpP caseinolytic protease, ATP-dependent, proteolyticsubunit homolog; EC 3.4.21.92; putative ATP-dependent Clp proteaseproteolytic subunit, mitochondrial

Gene ID [8192](#)

mRNA Refseq [NM_006012](#)

Protein Refseq [NP_006003](#)

MIM [601119](#)

UniProt ID [Q16740](#)

 Tel: 1-631-559-9269 1-516-512-3133

 Email: info@creative-biomart.com  Fax: 1-631-938-8127

 45-1 Ramsey Road, Shirley, NY 11967, USA

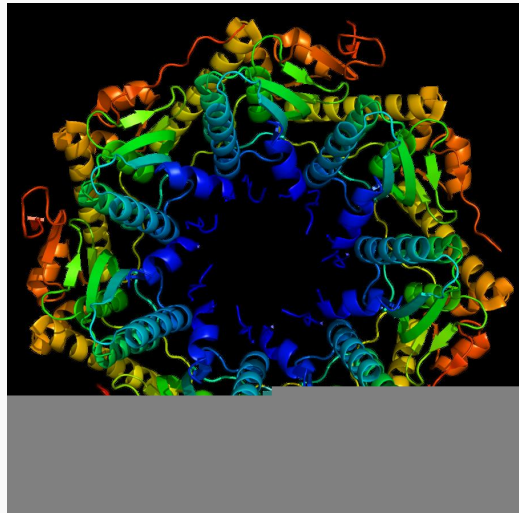
Chromosome

19p13.3

Location**Function**

ATP binding; nucleotidebinding; peptidase activity; protein binding; serine-type endopeptidaseactivity

PDB rendering based
on 1tg6.



 Tel: 1-631-559-9269 1-516-512-3133

 Email: info@creative-biomart.com  Fax: 1-631-938-8127

 45-1 Ramsey Road, Shirley, NY 11967, USA