

Recombinant Human CLSTN1 Protein, GST-tagged

Cat. No. CLSTN1-1518H Lot. No. (See product label)

SPECIFICATION

Product Overview Human CLSTN1 full-length ORF (AAH33902.1, 1 a.a. - 971 a.a.) recombinant protein with GST-tag at N-terminal.

Species Human

Source Wheat Germ

Description This gene is a member of the calyntenin family, a subset of the cadherin superfamily. The encoded transmembrane protein, also known as alcadein-alpha, is thought to bind to kinesin-1 motors to mediate the axonal anterograde transport of certain types of vesicle. Amyloid precursor protein (APP) is trafficked via these vesicles and so this protein is being investigated to see how it might contribute to the mechanisms underlying Alzheimer's disease. Alternative splicing results in multiple transcript variants. [provided by RefSeq, Nov 2014]

Molecular Mass 135.1 kDa

AA Sequence

```
MLRRPAPALAPAARLLL LAGLLCGGGVWAARV NKHKPWLEPTYHGIVTENDNTVLLD
PPLIALDKDAPLRFAGEICGFKIHGQNV PFDVAVVVDKSTGEGVIRSKEKLDCELQKDY
SFTIQAYDCGKGP DGTNVKKSHKATVHIQVNDVNEYAPVFKEKSYKATVIEGKQYDS
ILRVEAVDADCSPQFSQICSYEIITPDVPFTVDKDG YIKNTEKLN YGKEHQYKLTVTAY
DCGKKRATEDVLVKISIKPTCTPGWQGWNNRIEYEPGTGALAVFPNIHLET CDEPVA
SVQATVELETS HIGKGC DRD TYSEKSLHRLCGAAAGTAELL PSPSGSLNWTMGLPT
DNGHDS DQVFEFNGTQAVRIPDGVSVSPKEPFTISVWMRHGPFG RKKETILC SSD
```

 Tel: 1-631-559-9269 1-516-512-3133

 Email: info@creative-biomart.com  Fax: 1-631-938-8127

 45-1 Ramsey Road, Shirley, NY 11967, USA

KTD MNRHHYSLYVHGCR LIFLFRQDPSEEKKYRPAEFHWKLNQVCDEEWHHYVLN
 VEFPSVTLYADGTSHEPFSVTEDYPLHPSKIETQLVVGACWQEFSGVENDNETEPV
 TVACAGGDLHMTQFFRGNLAGLTLRSGKLADKKVIDCLYTCKEGLDLQVLEDSGRG
 VQIQAHRSQLVLTLEGEDLGELDKAMQHISYLN SRQFP TPGIRRLKITSTIKCFNEATC
 ISVPPVDGYVMVLQPEEPKISLSGVHHFARAASEFESSEGVFLFPELRIISTITREVEP
 EGDGAEDPTVQESLVSEEIVHDLDTCEVTVEGEELNHEQESLEVDMARLQQKGIEV
 SSELGMTFTGVDTMASYEEVLHLLRYRNWHARSLDRKFKLICSELNGRYSISNEFK
 VEVNVIHTANPMEHANHMAAQPQFVHPEHR SFVDLSGHNLANPHFAVVHSTATVV
 IVVCVSSLVFMILGVFRIRAAHRRRTMRDQDTGKENEMDWDD SALTITVNP METYED
 QHSSEEEEEEEEESEEDGE EEDDITSAESESSEEEEEGEQGD PQNATRQQQLEWD
 DSTLSY

Applications

Enzyme-linked Immunoabsorbent Assay
 Western Blot (Recombinant protein)
 Antibody Production
 Protein Array

Notes

Best use within three months from the date of receipt of this protein.

Storage

Store at -80 centigrade. Aliquot to avoid repeated freezing and thawing.

Storage Buffer

50 mM Tris-HCl, 10 mM reduced Glutathione, pH=8.0 in the elution buffer.

GENE INFORMATION

Gene Name

CLSTN1 calsynenin 1 [Homo sapiens]

Official Symbol

CLSTN1

Synonyms

CLSTN1; calsynenin 1; calsynenin-1; cadherin related family member 12; CDHR12;
 CSTN1; KIAA0911; alcadein-alpha; alcadein alpha 1; non-classical cadherin

 Tel: 1-631-559-9269 1-516-512-3133

 Email: info@creative-biomart.com  Fax: 1-631-938-8127

 45-1 Ramsey Road, Shirley, NY 11967, USA

XB31alpha; cadherin-related family member 12; non-classical cadherin XB31alpha1; alzheimer-related cadherin-like protein; PIK3CD; ALC-ALPHA; XB31alpha; alalpha1; alalpha2; FLJ32258;

Gene ID 22883

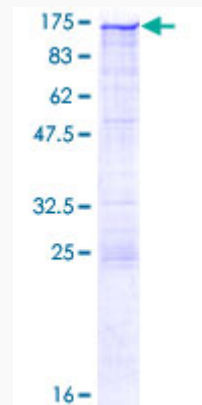
mRNA Refseq NM_001009566

Protein Refseq NP_001009566

MIM 611321

UniProt ID O94985

**Quality Control
Testing:**



12.5% SDS-PAGE Stained with Coomassie Blue.

 Tel: 1-631-559-9269 1-516-512-3133

 Email: info@creative-biomart.com  Fax: 1-631-938-8127

 45-1 Ramsey Road, Shirley, NY 11967, USA