

Recombinant Human CLSTN1 Protein, Myc/DDK-tagged, C13 and N15-labeled

Cat. No. CLSTN1-4490H **Lot. No.** (See product label)

SPECIFICATION

Product Overview	CLSTN1 MS Standard C13 and N15-labeled recombinant protein (NP_001009566) with a C-terminal MYC/DDK tag, was expressed in HEK293 cells.
Species	Human
Source	HEK293
Description	This gene is a member of the calsynenin family, a subset of the cadherin superfamily. The encoded transmembrane protein, also known as alcadein-alpha, is thought to bind to kinesin-1 motors to mediate the axonal anterograde transport of certain types of vesicle. Amyloid precursor protein (APP) is trafficked via these vesicles and so this protein is being investigated to see how it might contribute to the mechanisms underlying Alzheimer's disease. Alternative splicing results in multiple transcript variants.
Molecular Mass	109.6 kDa
AA Sequence	MLRRPAPALAPAARLLLGLLCCGGVWAARVNHKHPWLEPTYHGIVTENDNTVLLD PPLIALDKDAPLRFASFVETVTKEGEICGFKIHGQNVPFDAVVVDKSTGEGVIRSKE KLDCELQKDYSFTIQAYDCGKGPDGTNVKKSHTATVHIQVNDVNEYAPVFKEKSYK ATVIEGKQYDSILRVEAVDADCSPQFSQICSYEIITPDVPFTVDKDG YIKNTEKLN YGK EHQYKLTVTAYDCGKKRATEDVLVKISIKPTCTPGWQGWNRIEYEPGTGALAVFPN IHLETCDEPVASVQATVELETS HIGK GCDRDTYSEKSLHRLCGAAAGTAELLPSPSG

 Tel: 1-631-559-9269 1-516-512-3133

 Email: info@creative-biomart.com  Fax: 1-631-938-8127

 45-1 Ramsey Road, Shirley, NY 11967, USA

SLNWTMGLPTDNGHDSQVFEFNGTQAVRIPDGVVSVSPKEPFTISVWMRHGPFG
 RKKETILCSSDKTDMNRHHYSLYVHGCRILFLFRQDPSEEKKYRPAEFHWKLNQVC
 DEEWHHYVLNVEFPSTLYVDGTSHEPFSVTEDYPLHPSKIETQLVVGACWQEFSG
 VENDNETEPVTVASAGGDLHMTQFFRGNLAGLTLRSGKLADKKVIDCLYTCKEGLDL
 QVLEDSGRGVQIQAHPSQLVLTLEGEDLGELDKAMQHISYLNRSRQFPTPGIRRLKITS
 TIKCFNEATCISVPPVDGYVMVLQPEEPKISLSGVHHFARAASEFESSEGVFLFPELRI
 ISTITREVEPEGDGAEDPTVQESLVSEEIVHDLDTCEVTVEGEELNHEQESLEVDMA
 RLQQKGIEVSSSELGMTFTGVDTMASYEEVLHLLRYRNWHARSLDRKFKLICSELN
 GRYISNEFKVEVNVIIHTANPMEHANHMAAQPQFVHPEHRSFVDLSGHNLANPHFPA
 VVPSTATVVIVCVSFLVFMILGVFRIRAAHRRRTMRDQDTGKENEMDWDDSAITITV
 NPMETYEDQHSSEEEEEEEEEEESEEDGEEDDITSAESESSEEEEEEGEQGDPQAT
 RQQQLEWDDSTLSYTRTRPLEQKLISEEDLAANDILDYKDDDDKV

Purity	> 80% as determined by SDS-PAGE and Coomassie blue staining
Stability	Stable for 3 months from receipt of products under proper storage and handling conditions.
Storage	Store at -80 centigrade. Avoid repeated freeze-thaw cycles.
Concentration	50 µg/mL as determined by BCA
Storage Buffer	100 mM glycine, 25 mM Tris-HCl, pH 7.3.

GENE INFORMATION

Gene Name	CLSTN1 calsyntenin 1 [Homo sapiens (human)]
Official Symbol	CLSTN1
Synonyms	CLSTN1; calsyntenin 1; calsyntenin-1; cadherin related family member 12; CDHR12;

 Tel: 1-631-559-9269 1-516-512-3133

 Email: info@creative-biomart.com  Fax: 1-631-938-8127

 45-1 Ramsey Road, Shirley, NY 11967, USA

CSTN1; KIAA0911; alcadein-alpha; alcadein alpha 1; non-classical cadherin XB31alpha; cadherin-related family member 12; non-classical cadherin XB31alpha1; alzheimer-related cadherin-like protein; PIK3CD; ALC-ALPHA; XB31alpha; alalpha1; alalpha2; FLJ32258;

Gene ID [22883](#)

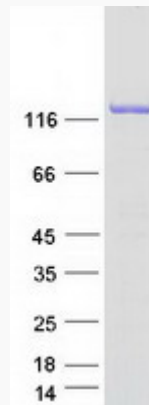
mRNA Refseq [NM_001009566](#)

Protein Refseq [NP_001009566](#)

MIM [611321](#)

UniProt ID [O94985](#)

SDS-PAGE



 Tel: 1-631-559-9269 1-516-512-3133

 Email: info@creative-biomart.com  Fax: 1-631-938-8127

 45-1 Ramsey Road, Shirley, NY 11967, USA