

Recombinant Human CLSTN2 Protein, GST-tagged

Cat. No. CLSTN2-1521H Lot. No. (See product label)

SPECIFICATION

Product Overview	Human CLSTN2 full-length ORF (AAI04486.1, 1 a.a. - 955 a.a.) recombinant protein with GST-tag at N-terminal.
Species	Human
Source	Wheat Germ
Description	CLSTN2 (Calsyntenin 2) is a Protein Coding gene. Diseases associated with CLSTN2 include Keratinizing Squamous Cell Carcinoma and Connective Tissue Cancer. GO annotations related to this gene include calcium ion binding. An important paralog of this gene is CLSTN1.
Molecular Mass	133.4 kDa
AA Sequence	MLPGRLCWVPLLLALGVGSGSGGGGDSRQRLLAAKVNKHKWPWIETSYHGVTENN DTVILDPPPLVALDKDAPVPPFAGEICAFKIHGQELPFEAVVLNKTSGEGRLRAKSPIDCE LQKEYTFIIQAYDCGAGPHETAWKKSHKAVVHIQVKDVNEFAPTFKEPAYKAVVTEG KIYDSILQVEAIDEDCSPQYSQICNYEIVTTDVPFAIDRNGNIRNTEKLSYDKQHQYEIL VTAYDCGQKPAQAQDTLVQVDVKPVCKPGWQDWTKRIEYQPGSGSMPLFPSIHLET CDGAVSSLQIVTELQTNIGKGCIRETYSEKSLQKLCGASSGIIDLLPSPSAATNMTA GLLVDSSEMIFKFDGRQGAKVPDGIVPKNLTDQFTITMWMKHGSPSPGVRAEKETILC NSDKTEMNRHHYALYVHNCRLVFLLRKDFDQADTFRPAEFHWKLDQICDKKEWHYY VINVEFPVVTLYMDGATYEPYLVTDNWPIHPSHIAMQLTVGACWQGGGEVTKPQFAQ FFHGSLASLTIRPGKMESQKVISCLQACKEGLDINSLES LGQGIKYHFNPSQSILVME

 Tel: 1-631-559-9269 1-516-512-3133

 Email: info@creative-biomart.com  Fax: 1-631-938-8127

 45-1 Ramsey Road, Shirley, NY 11967, USA

GDDIGNINRALQKVSYINSRQFPTAGVRRLLKVSSKVQCFGEDVCISIPEVDAYVMVLQ
 AIEPRITLRGTDHFWRPAAQFESARGVTLFPDIKIVSTFAKTEAPGDVKTTDPKSEVL
 EEMLHNLD FCDILVIGGDLDP RQECLELNHSELHQRHL DATNSTAGYSIYGVGSMR
 YEQVLHHIRYRNWRPASLEARRFRIKCELN GRYSNEFNLEVSILHEDQVSDKEHV
 NHLIVQPPFLQSVHHPESRSSIQHSSVPSIATVVIISVCMLVFV VAMGVYRVRIAHQ
 HFIQETEA AKESEMDWDDSALTITVNPMEKH EGP GHGEDETEGEEEEEEAEEEMSSS
 SGSDDSEEEEEEEGMGRGRH GQNGARQAQLEWDDSTLPY

Applications	Enzyme-linked Immunoabsorbent Assay Western Blot (Recombinant protein) Antibody Production Protein Array
Notes	Best use within three months from the date of receipt of this protein.
Storage	Store at -80 centigrade. Aliquot to avoid repeated freezing and thawing.
Storage Buffer	50 mM Tris-HCl, 10 mM reduced Glutathione, pH=8.0 in the elution buffer.

GENE INFORMATION

Gene Name	CLSTN2 calsyntenin 2 [Homo sapiens]
Official Symbol	CLSTN2
Synonyms	CS2; CSTN2; CDHR13; ALC-GAMMA; alcagamma
Gene ID	64084
mRNA Refseq	NM_022131.2

 Tel: 1-631-559-9269 1-516-512-3133

 Email: info@creative-biomart.com  Fax: 1-631-938-8127

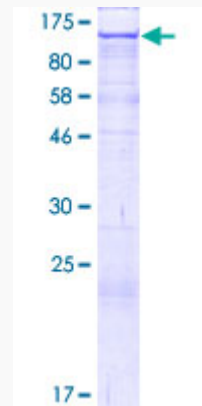
 45-1 Ramsey Road, Shirley, NY 11967, USA

Protein Refseq NP_071414.2

MIM 611323

UniProt ID Q9H4D0

**Quality Control
Testing:**



12.5% SDS-PAGE Stained with Coomassie Blue.

 Tel: 1-631-559-9269 1-516-512-3133

 Email: info@creative-biomart.com  Fax: 1-631-938-8127

 45-1 Ramsey Road, Shirley, NY 11967, USA