

# Recombinant Human CLSTN2 Protein, Myc/DDK-tagged, C13 and N15-labeled

Cat. No. CLSTN2-3227H Lot. No. (See product label)

## SPECIFICATION

**Product Overview** CLSTN2 MS Standard C13 and N15-labeled recombinant protein (NP\_071414) with a C-terminal MYC/DDK tag, was expressed in HEK293 cells.

**Species** Human

**Source** HEK293

**Description** May modulate calcium-mediated postsynaptic signals.

**Molecular Mass** 106.8 kDa

**AA Sequence**

MLPGRLCWVPLLLALGVGSGSGGGGDSRQRLLAAKVNKHKPWIETSYHGVITENN  
 DTVILDPPPLVALDKDAPVPFAGEICAFKIHGQELPFEAVVLNKTSGEGRLRAKSPIDCE  
 LQKEYTFIIQAYDCGAGPHETAWKKSHKAVVHIQVKDVNEFAPTFKEPAYKAVVTEG  
 KIYDSILQVEAIDEDCSPQYSQICNYEIVTTDVPFAIDRNGNIRNTEKLSYDKQHQYEIL  
 VTAYDCGQKPAQAQDTLVQVDVVKPVCKPGWQDWTKRIEYQPGSGSMPLFPSIHLET  
 CDGAVSSLQIVTELQTNIGKGCIRETYSEKSLQKLCGASSGIIDLLPSPSAATNMTA  
 GLLVDSSEMIFKFDGRQGAKVPDGIVPKNLTDQFTITMWMKHGSPSPGVRAEKETILC  
 NSDKTEMNRHHYALYVHNCRLVFLLRKDFDQADTFRPAEFHWKLDQICDKEWHYY  
 VINVEFPVVTLYMDGATYEPYLVTDNWPIHPSHIAMQLTVGACWQGGVEVTKPQFAQ  
 FFHGSLASLTIRPGKMESQKVISCLQACKEGLDINSLES LGQGIKYHFNPSQSILVME  
 GDDIGNINRALQKVSYINSRQFPTAGVRRLLKVVSSKVQCFCGEDVCISIPEVDAYVMVLQ  
 AIEPRITLRGTDHFWRPAAQFESARGVTLFPDIKIVSTFAKTEAPGDVKTTPKSEVL

 Tel: 1-631-559-9269 1-516-512-3133

 Email: [info@creative-biomart.com](mailto:info@creative-biomart.com)  Fax: 1-631-938-8127

 45-1 Ramsey Road, Shirley, NY 11967, USA

EEMLHNLD FCDILVIGGDLDP RQECLELNHSELHQ RHL DATNSTAGYSIYGVGSM SR  
 YEQVLHHIRYRNWRPASLEARRFR IKCSELNGRYTSNEFNLEVSILHEDQVSDKEHV  
 NHLIVQPPFLQSVHHPESRSSIQHSSV VPSIATVVIIISVCMLVFV VAMGVYRVRIA HQ  
 HFIQETEA AKESEMDWDDSALTITVNPMEKH EGP GHEDETEGEEEEEEAEEEMSSS  
 SGSDDSEEEEEEEGMGRGRHGQNGARQA QLEWDDSTLPYTRTRPLEQKLISEEDL  
 AANDILDYKDDDDKV

<b>Purity</b>	> 80% as determined by SDS-PAGE and Coomassie blue staining
<b>Stability</b>	Stable for 3 months from receipt of products under proper storage and handling conditions.
<b>Storage</b>	Store at -80 centigrade. Avoid repeated freeze-thaw cycles.
<b>Concentration</b>	50 µg/mL as determined by BCA
<b>Storage Buffer</b>	100 mM glycine, 25 mM Tris-HCl, pH 7.3.

## GENE INFORMATION

<b>Gene Name</b>	CLSTN2 calsyntenin 2 [ Homo sapiens (human) ]
<b>Official Symbol</b>	CLSTN2
<b>Synonyms</b>	CLSTN2; calsyntenin 2; CS2; CSTN2; CDHR13; ALC-GAMMA; alcagamma; calsyntenin-2; alcadein gamma; cadherin-related family member 13
<b>Gene ID</b>	64084
<b>mRNA Refseq</b>	NM_022131

 Tel: 1-631-559-9269 1-516-512-3133

 Email: [info@creative-biomart.com](mailto:info@creative-biomart.com)  Fax: 1-631-938-8127

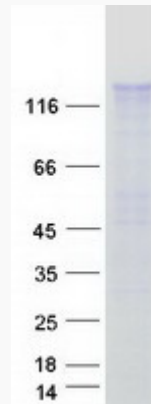
 45-1 Ramsey Road, Shirley, NY 11967, USA

**Protein Refseq** NP\_071414

**MIM** 611323

**UniProt ID** Q9H4D0

**SDS-PAGE**



 Tel: 1-631-559-9269 1-516-512-3133

 Email: [info@creative-biomart.com](mailto:info@creative-biomart.com)  Fax: 1-631-938-8127

 45-1 Ramsey Road, Shirley, NY 11967, USA