

Recombinant Human CLSTN3 Protein, GST-tagged

Cat. No. CLSTN3-1522H Lot. No. (See product label)

SPECIFICATION

Product Overview	Human CLSTN3 full-length ORF (AAH39075.1, 1 a.a. - 289 a.a.) recombinant protein with GST-tag at N-terminal.
Species	Human
Source	Wheat Germ
Description	CLSTN3 (Calsyntenin 3) is a Protein Coding gene. GO annotations related to this gene include calcium ion binding. An important paralog of this gene is CLSTN1.
Molecular Mass	57.4 kDa
AA Sequence	MAARSVALTAVCSVYVFLQGVAWSAQLVGSWVMLHIWLYRALLETPRRVPLLPQC EQAARWLWVWASMQAGKGLAQVWGVATFVQLCAHTVFLSMYLCMHICFAAISSKVR VRVNAPFCVSVPLKVHAPLSLGIKIVGLQGQKHGRATGEAGMPQGEMLGKQEPQTS SSPKPTRRREVSRSSELSPVIPSAATLIIVCVGFLVLMVVLGLVRIHSLHRRVSGAGG PPGASSDPKDPDLFWDDSAITIVNPMEVRGLGKRGSVGSRLWSTHVLPESAVLCD GGCWGPAGG
Applications	Enzyme-linked Immunoabsorbent Assay Western Blot (Recombinant protein) Antibody Production Protein Array
Notes	Best use within three months from the date of receipt of this protein.

 Tel: 1-631-559-9269 1-516-512-3133

 Email: info@creative-biomart.com  Fax: 1-631-938-8127

 45-1 Ramsey Road, Shirley, NY 11967, USA

Storage Store at -80 centigrade. Aliquot to avoid repeated freezing and thawing.

Storage Buffer 50 mM Tris-HCl, 10 mM reduced Glutathione, pH=8.0 in the elution buffer.

GENE INFORMATION

Gene Name CLSTN3 calsyntenin 3 [Homo sapiens]

Official Symbol CLSTN3

Synonyms CLSTN3; calsyntenin 3; calsyntenin-3; cadherin related family member 14; CDHR14; CSTN3; KIAA0726; alc-beta; alcadein beta; alcadein-beta; cadherin-related family member 14; alcbeta; MGC131797; MGC138488;

Gene ID 9746

mRNA Refseq NM_014718

Protein Refseq NP_055533

MIM 611324

UniProt ID Q9BQT9

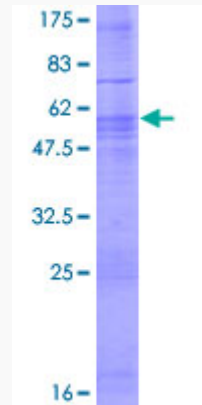
 Tel: 1-631-559-9269 1-516-512-3133

 Email: info@creative-biomart.com  Fax: 1-631-938-8127


 45-1 Ramsey Road, Shirley, NY 11967, USA

Quality Control


Testing:



12.5% SDS-PAGE Stained with Coomassie Blue.

 Tel: 1-631-559-9269 1-516-512-3133

 Email: info@creative-biomart.com  Fax: 1-631-938-8127

 45-1 Ramsey Road, Shirley, NY 11967, USA