

## Recombinant Human CLTC, GST-tagged

Cat. No. CLTC-26707TH Lot. No. (See product label)

### SPECIFICATION

<b>Product Overview</b>	Human CLTC partial ORF (NP_004850, 232 a.a. - 340 a.a.) recombinant protein with GST-tag at N-terminal.
<b>Species</b>	Human
<b>Source</b>	Wheat Germ
<b>Description</b>	Clathrin is a major protein component of the cytoplasmic face of intracellular organelles, called coated vesicles and coated pits. These specialized organelles are involved in the intracellular trafficking of receptors and endocytosis of a variety of macromolecules. The basic subunit of the clathrin coat is composed of three heavy chains and three light chains.
<b>Form</b>	50 mM Tris-HCl, 10 mM reduced Glutathione, pH=8.0 in the elution buffer
<b>Molecular Mass</b>	37.73 kDa
<b>AA Sequence</b>	EVGTPPTGNQPFPPKKAVDVFFPPEAQNDFPVAMQISEKHVDVFLITKYGYIHLYDLET GTCIYMNRISGETIFVTAPHEATAGIIGVNRKGVLSVCVEEENIIPYITN
<b>Applications</b>	AP; Array; ELISA; WB-Re
<b>Storage</b>	Store at -80 centigrade. Aliquot to avoid repeated freezing and thawing.

### GENE INFORMATION

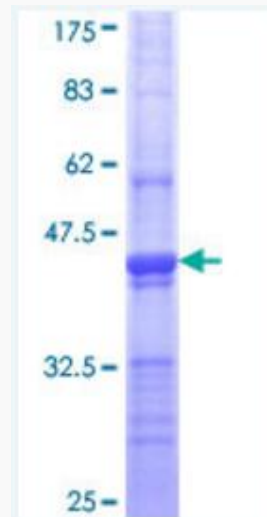
 Tel: 1-631-559-9269 1-516-512-3133

 Email: [info@creative-biomart.com](mailto:info@creative-biomart.com)  Fax: 1-631-938-8127

 45-1 Ramsey Road, Shirley, NY 11967, USA

<b>Gene Name</b>	Clathrin heavy chain [ Homo sapiens (human) ]
<b>Official Symbol</b>	CLTC
<b>Synonyms</b>	CHC; CHC17; CLH-17; CLTCL2; Hc; KIAA0034
<b>Gene ID</b>	1213
<b>mRNA Refseq</b>	NM_004859
<b>Protein Refseq</b>	NP_004850
<b>MIM</b>	118955
<b>UniProt ID</b>	Q00610

**12.5% SDS-PAGE**  
**Stained with**  
**Coomassie Blue**



 Tel: 1-631-559-9269 1-516-512-3133

 Email: [info@creative-biomart.com](mailto:info@creative-biomart.com)  Fax: 1-631-938-8127

 45-1 Ramsey Road, Shirley, NY 11967, USA