

Recombinant Full Length Human CLTCL1 Protein, C-Flag-tagged

Cat. No. CLTCL1-1158HFL **Lot. No.** (See product label)

SPECIFICATION

Product Overview	Recombinant Full Length Human CLTCL1 Protein, fused to Flag-tag at C-terminus, was expressed in Mammalian cells.
Species	Human
Source	Mammalian Cells
Description	This gene is a member of the clathrin heavy chain family and encodes a major protein of the polyhedral coat of coated pits and vesicles. Chromosomal aberrations involving this gene are associated with meningioma, DiGeorge syndrome, and velo-cardio-facial syndrome. Multiple transcript variants encoding different isoforms have been found for this gene.
Form	25 mM Tris HCl, pH 7.3, 100 mM glycine, 10% glycerol.
Molecular Mass	186.9 kDa
AA Sequence	<p>MAQILPVRFQEHEFQLQNLGINPANIGFSTLTMESDKFICIREKVGEQAQVTIIDMSDPM APIRRPISAES AIMNPASKVIALKAGKTLQIFNIEMKSKMKAHTMAEEVIFWKWVSVN TVALVTETAVYHWSMEGDSQPMK MFDRHTSLVGCQVIHYRTDEYQKWLLLVGISA QQNRVVGAMQLYSVDRKVSQPIEGHAAFAEFKMEGNA KPATLFCFAVRNPTGGK LHIIIEVGQPAAGNQPFVKKAVDVFFPPEAQNDFPVAMQIGAKHGVIYLITKYG YLHLY DLESGVCICMNRISADTIFVTAPHKPTSGIIGVNNKKGQVLSVCVEEDNIVNYATNVLQN PDLGLR LAVRSNLAGAELFVRKFNTLFAQGSYAEAAKVAASAPKGIKILRTRETVQKF</p>

 Tel: 1-631-559-9269 1-516-512-3133

 Email: info@creative-biomart.com  Fax: 1-631-938-8127

 45-1 Ramsey Road, Shirley, NY 11967, USA

QSIPAQSGQASPLLQYFGI LLDQGQLNKLESLELCHLVLQQGRKQLLEKWLKEDKLE
CSEELGDLVKTTPMLALSIVYLRANVPSKVIQ CFAETGQFQKIVLYAKKVGYPDWI
FLLRGVMKISPEQGLQFSRMLVQDEEPLANISQIVDIFMENS LIQ QCTSFLLDALKNN
RPAEGLLQTWLLEMNLVHAPQVADAILGNKMFTHYDRAHIAQLCEKAGLLQQALEH
Y TDLYDIKRAVVHHTLLNPEWLVNFFGSLSVEDSVECLHAMLSANIRQNLQLCVQVA
SKYHEQLGTQALVE LFESFKSYKGLFYFLGSIVNFSQDPDVHLKYQAACKTGQIKE
VERICRESSCYNPERVKNFLKEAKLTD QLPLIIVCDRFGFVHDLVLYLRNNLQRYIEI
YVQKVNSRTPAVIGGLLDVDCSEEVIKHLIMAVRGQF STDELVAEVEKRNRLKLLL
PWLESQIQEGCEEPATHNALAKIYIDSNNSPECFLRENAYYDSSVVGRYCE KRDPH
LACVAYERGQCDLELIKVCNENSLFKSEARYLVCRKDPELWAHVLEETNPSRRQLID
QVVQTALS ETRDPEEISVTVKAFMTADLPNELIELLEKIVLDNSVFSEHRNLQNLILT
AIKADRTRVMEYISRLDNY DALDIASIAVSSALYEEAFTVFHKFDMNASAIQV LIEHIG
NLDRAYEFAERCNEPAVWSQLAQAQLQKDL VKEAINSYIRGDDPSSYLEVVQSASR
SNNWEDLVKFLQMARKKGRESYIETELIFALAKTSRVSELEDFI NGPNNAHIQQVGD
RCYEEGMYEAAKLLYSNVSNFARLASTLVHLGEYQAAVDNSRKASSTRTWKEVCFA
C MDGQEFRFAQLCGLHIVIHADLEELMCYYQDRGYFEELILLLEAALGLERAHMG
MFTELAILYSKFKPQ KMLEHLELFWSRVNIPKVLRAAEQAHLWAELVFLYDKYEEYD
NAVLTMMSHPTEAWKEGQFKDIITKVAN VELCYRALQFYLDYKPLLINDLLLVLSPRL
DHTWTVSFFSKAGQLPLVKPYLRSVQSHNNKSVNEALNHL LTEEEDYQGLRASIDA
YDNFDNISLAQQLEKHQLMEFRCAAYLYKGNWWAQSVELCKKDHLKYDAMQH A
AESRDAELAQKLLQWFLEEGKRECFAACLFTCYDLLRPDMVLELAWRHNLVDLAMP
YFIQVMREYLSKV
DKLDALESLRKQEEHVTEPAPLVDFDFGHETRTRPLEQKLISEEDLAANDILDYKDDD
DKV

Purity > 80% as determined by SDS-PAGE and Coomassie blue staining.

Stability Stable for 12 months from the date of receipt of the product under proper storage and handling conditions. Avoid repeated freeze-thaw cycles.

 Tel: 1-631-559-9269 1-516-512-3133

 Email: info@creative-biomart.com  Fax: 1-631-938-8127

 45-1 Ramsey Road, Shirley, NY 11967, USA

Storage	Store at -80 centigrade.
Concentration	>50 ug/mL as determined by microplate BCA method.
Preparation	Recombinant protein was captured through anti-DDK affinity column followed by conventional chromatography steps.
Protein Families	Druggable Genome
Protein Pathways	Endocytosis, Huntington's disease, Lysosome
Full Length	Full L.

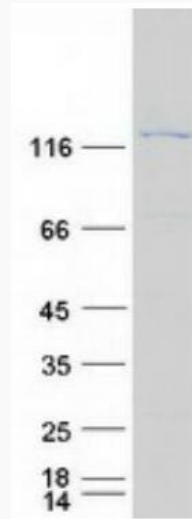
GENE INFORMATION

Gene Name	CLTCL1 clathrin heavy chain like 1 [Homo sapiens (human)]
Official Symbol	CLTCL1
Synonyms	CLTD; CHC22; CLH22; CLTCL
Gene ID	8218
mRNA Refseq	NM_007098.4
Protein Refseq	NP_009029.3
MIM	601273
UniProt ID	P53675

 Tel: 1-631-559-9269 1-516-512-3133

 Email: info@creative-biomart.com  Fax: 1-631-938-8127

 45-1 Ramsey Road, Shirley, NY 11967, USA



Coomassie blue staining of purified CLTCL1 protein.

 Tel: 1-631-559-9269 1-516-512-3133

 Email: info@creative-biomart.com  Fax: 1-631-938-8127

 45-1 Ramsey Road, Shirley, NY 11967, USA