

Recombinant Human CLTCL1 Protein (1423-1566 aa), His-tagged

Cat. No. CLTCL1-1363H Lot. No. (See product label)

SPECIFICATION

Product Overview	Recombinant Human CLTCL1 Protein (1423-1566 aa) is produced by Yeast expression system. This protein is fused with a 6xHis tag at the N-terminal. Research Area: Signal Transduction. Protein Description: Partial.
Species	Human
Source	Yeast
ProteinLength	1423-1566 aa
Description	Clathrin is the major protein of the polyhedral coat of coated pits and vesicles. Two different adapter protein complexes link the clathrin lattice either to the plasma mbrane or to the trans-Golgi network.
Form	Tris-based buffer,50% glycerol
Molecular Mass	18.8 kDa
AA Sequence	LLVLSPLRDHTWTVSFFSKAGQLPLVKPYLRSVQSHNNKSVNEALNHLLEEDYQ GLRASIDAYDNFDNISLAQQLEKHQLMEFRICIAAYLYKGNNWWAQSVELCKKDHL KDAMQHAAESRDAELAQKLLQWFLEEGKRECF
Purity	> 90% as determined by SDS-PAGE.

 Tel: 1-631-559-9269 1-516-512-3133

 Email: info@creative-biomart.com  Fax: 1-631-938-8127

 45-1 Ramsey Road, Shirley, NY 11967, USA

Notes	Repeated freezing and thawing is not recommended. Store working aliquots at 4 centigrade for up to one week.
Storage	The shelf life is related to many factors, storage state, buffer ingredients, storage temperature and the stability of the protein itself. Generally, the shelf life of liquid form is 6 months at -20 centigrade/-80 centigrade. The shelf life of lyophilized form is 12 months at -20 centigrade/-80 centigrade.
Concentration	A hardcopy of COA with reconstitution instruction is sent along with the products. Please refer to it for detailed information.

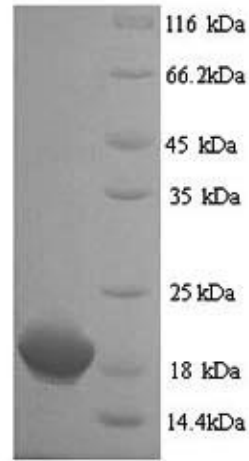
GENE INFORMATION

Gene Name	CLTCL1 clathrin, heavy chain-like 1 [Homo sapiens]
Official Symbol	CLTCL1
Synonyms	CLTD; CHC22; CLH22; CLTCL;
Gene ID	8218
mRNA Refseq	NM_007098.3
Protein Refseq	NP_009029.3
MIM	601273
UniProt ID	P53675

 Tel: 1-631-559-9269 1-516-512-3133

 Email: info@creative-biomart.com  Fax: 1-631-938-8127

 45-1 Ramsey Road, Shirley, NY 11967, USA



(Tris-Glycine gel) Discontinuous SDS-PAGE (reduced) with 5% enrichment gel and 15% separation gel.

 Tel: 1-631-559-9269 1-516-512-3133

 Email: info@creative-biomart.com  Fax: 1-631-938-8127

 45-1 Ramsey Road, Shirley, NY 11967, USA