

Recombinant Human CLTCL1 Protein, Myc/DDK-tagged, C13 and N15-labeled

Cat. No. CLTCL1-2067H **Lot. No.** (See product label)

SPECIFICATION

Product Overview

CLTCL1 MS Standard C13 and N15-labeled recombinant protein (NP_009029) with a C-terminal MYC/DDK tag, was expressed in HEK293 cells.

Species

Human

Source

HEK293

Description

This gene is a member of the clathrin heavy chain family and encodes a major protein of the polyhedral coat of coated pits and vesicles. Chromosomal aberrations involving this gene are associated with meningioma, DiGeorge syndrome, and velo-cardio-facial syndrome. Multiple transcript variants encoding different isoforms have been found for this gene.

Molecular Mass

186.9 kDa

AA Sequence

MAQILPVRFQEHFQLQNLGINPANIGFSTLTMESDKFICIREKVGEQAQVTIIDMSDPM
 APIRRPISAESAIMNPASKVIALKAGKTLQIFNIEMKSKMKAHTMAEEVIFWKWVSVNT
 VALVTETAVYHWSMEGDSQPMKMFDRHTSLVGCQVIHYRTDEYQKWLLLVGISAQ
 QNRVVGAMQLYSVDRKVSQPIEGHAAFAEFKMEGNAKPATLFCFAVRNPTGGKL
 HIIIEVGQPAAGNQPFVKKAVDVFFPPEAQNDFPVAMQIGAKHGVIYLITKYGYLHLYD
 LESGVCICMNRISADTIFVTAPHKPTSGIIGVNNKKGQVLSVCVEEDNIVNYATNVLQNP
 DLGLRLAVRSNLAGAEKLFVRKFNTLFAQGSYAEAAKVAASAPKGILRTRETVQKFQ
 SIPAQSGQASPLLQYFGILLDQGQLNKLESLELCHLVLQQGRKQLEKWLKEDKLEC

 Tel: 1-631-559-9269 1-516-512-3133

 Email: info@creative-biomart.com  Fax: 1-631-938-8127

 45-1 Ramsey Road, Shirley, NY 11967, USA

SEELGDLVKTTDPMLALS VYLRANVPSKVIQCFAETGQFQKIVLYAKKVGYPDWIFL
 LRGVMKISPEQGLQFSRMLVQDEEPLANISQIVDIFMENS LIQQCTSFLLDALKNNRP
 AEGLLQTWLLEMNLVHAPQVADAILGNKMFTHYDRAHIAQLCEKAGLLQQALEHYTD
 LYDIKRAVVHTHLLNPEWL V NFFGSLSVEDSVECLHAMLSANIRQNLQLCVQVASKY
 HEQLGTQALVELFESFKSYKGLFYFLGSIVNFSQDPDVHLKYQAACKTGQIKEVERI
 CRESSCYNPERVKNFLKEAKLTDQLPLIIVCDRFGFVHDLVLYLYRNNLQRYIEIYVQK
 VNPSRTPAVIGLLDVDCSEEVIKHLIMAVRGQFSTDELVAEVEKRNRLKLLLPWLES
 QIQEGCEEPATHNALAKIYIDSNNSPECFLRENAYYDSSVVGRYCEKRDPHLACVAY
 ERGQCDLELIKVCNENSLFKSEARYLVCRKDPELWAHVLEETNPSRRQLIDQVVQTA
 LSETRDPEEISVTVKAFMTADLPNELIELLEKIVLDNSVFSEHRNLQNLLILTAIKADRT
 RVMEYISRLDNYDALDIASIAVSSALYEEAFTVFHKFDMNASAIQV LIEHIGNLDRAYE
 FAERCNEPAVWSQLAQAQLQKDLVKEAINSYIRGDDPSSYLEVVQSASRSNNWEDL
 VKFLQMARKKGRESYIETELIFALAKTSRVSELEDFINGPNNAHIQQVGDRCYEEGM
 YEAAKLLYSNVSNFARLASTLVHLGEYQAAVDNSRKASSTRTWKEVCFACMDGQEF
 RFAQLCGLHIVIHADLEELMCYYQDRGYFEELILLEAALGLERAHMGMFTELAILYS
 KFKPQKMLEHLELFWSRVNIPKVLRAAEQAHLWAELVFLYDKYEEYDNAVLTMMSH
 PTEAWKEGQFKDIITKVANVELCYRALQFYLDYKPLLINDLLLVLSPRLDHTWTVSFF
 SKAGQLPLVKPYLRSVQSHNNKSVNEALNHL LTEEEDYQGLRASIDAYDNFDNISLA
 QQLEKHQLMEFRCIAAYLYKGNNWWAQSVELCKKDHLKYDAMQHAAESRDAELAQ
 KLLQWFLEEGKRECFAACLFTCYDLLRPDMVLELAWRHNLVDLAMPYFIQVMREYL
 SKVDKLDALSLRKQEEHVTEPAPLVDFDFGHETRTRPLEQKLISEEDLAANDILDYK
 DDDDKV

Purity > 80% as determined by SDS-PAGE and Coomassie blue staining

Stability Stable for 3 months from receipt of products under proper storage and handling conditions.

Storage Store at -80 centigrade. Avoid repeated freeze-thaw cycles.

 Tel: 1-631-559-9269 1-516-512-3133

 Email: info@creative-biomart.com  Fax: 1-631-938-8127

 45-1 Ramsey Road, Shirley, NY 11967, USA

Concentration 50 µg/mL as determined by BCA

Storage Buffer 100 mM glycine, 25 mM Tris-HCl, pH 7.3.

GENE INFORMATION

Gene Name [CLTCL1 clathrin heavy chain like 1 \[Homo sapiens \(human\) \]](#)

Official Symbol [CLTCL1](#)

Synonyms CLTCL1; clathrin heavy chain like 1; CLTD; CHC22; CLH22; CLTCL; clathrin heavy chain 2; CLH-22; Clathrin, heavy polypeptide D; clathrin heavy chain on chromosome 22; clathrin, heavy polypeptide-like 1

Gene ID [8218](#)

mRNA Refseq [NM_007098](#)


Protein Refseq [NP_009029](#)

MIM [601273](#)

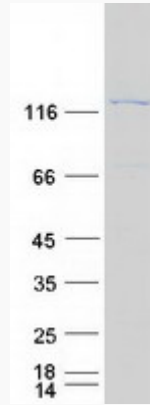
UniProt ID [P53675](#)

 Tel: 1-631-559-9269 1-516-512-3133

 Email: info@creative-biomart.com  Fax: 1-631-938-8127

 45-1 Ramsey Road, Shirley, NY 11967, USA

SDS-PAGE



 Tel: 1-631-559-9269 1-516-512-3133

 Email: info@creative-biomart.com  Fax: 1-631-938-8127

 45-1 Ramsey Road, Shirley, NY 11967, USA