

# Recombinant Human CLTCL1 Protein (1423-1566 aa), His-tagged

Cat. No. CLTCL1-411H Lot. No. (See product label)

## SPECIFICATION

<b>Product Overview</b>	Recombinant Human CLTCL1 Protein (1423-1566 aa) is produced by E. coli expression system. This protein is fused with a 6xHis tag at the N-terminal. Research Area: Cell Biology. Protein Description: Full Length of Mature Protein.
<b>Species</b>	Human
<b>Source</b>	E.coli
<b>ProteinLength</b>	1423-1566 aa
<b>Description</b>	Clathrin is the major protein of the polyhedral coat of coated pits and vesicles. Two different adapter protein complexes link the clathrin lattice either to the plasma mbrane or to the trans-Golgi network.
<b>Form</b>	Tris-based buffer, 50% glycerol
<b>Molecular Mass</b>	20.8 kDa
<b>AA Sequence</b>	LLVLSPRLDHTWTVSFFSKAGQLPLVKPYLRSVQSHNNKSVNEALNHLLEEDYQ GLRASIDAYDNFDNISLAQQLEKHQLMEFRCIAAYLYKGNNWWAQSVELCKKDHL KDAMQHAAESRDAELAQKLLQWFLEEGKRECF
<b>Purity</b>	> 90% as determined by SDS-PAGE.

 Tel: 1-631-559-9269 1-516-512-3133

 Email: [info@creative-biomart.com](mailto:info@creative-biomart.com)  Fax: 1-631-938-8127

 45-1 Ramsey Road, Shirley, NY 11967, USA

<b>Notes</b>	Repeated freezing and thawing is not recommended. Store working aliquots at 4 centigrade for up to one week.
<b>Storage</b>	The shelf life is related to many factors, storage state, buffer ingredients, storage temperature and the stability of the protein itself. Generally, the shelf life of liquid form is 6 months at -20 centigrade/-80 centigrade. The shelf life of lyophilized form is 12 months at -20 centigrade/-80 centigrade.
<b>Concentration</b>	A hardcopy of COA with concentration instruction is sent along with the products.

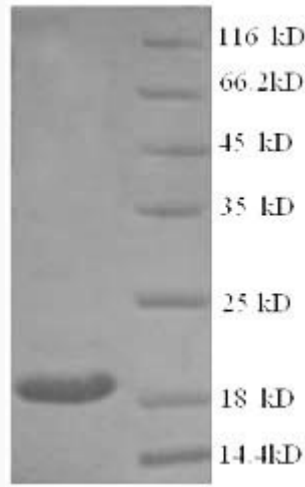
## GENE INFORMATION

<b>Gene Name</b>	CLTCL1 clathrin, heavy chain-like 1 [ Homo sapiens ]
<b>Official Symbol</b>	CLTCL1
<b>Synonyms</b>	CLTD; CHC22; CLH22; CLTCL
<b>Gene ID</b>	8218
<b>mRNA Refseq</b>	NM_007098.3
<b>Protein Refseq</b>	NP_009029.3
<b>MIM</b>	601273
<b>UniProt ID</b>	P53675

 Tel: 1-631-559-9269 1-516-512-3133

 Email: [info@creative-biomart.com](mailto:info@creative-biomart.com)  Fax: 1-631-938-8127

 45-1 Ramsey Road, Shirley, NY 11967, USA



(Tris-Glycine gel) Discontinuous SDS-PAGE (reduced) with 5% enrichment gel and 15% separation gel.

Tel: 1-631-559-9269 1-516-512-3133

Email: [info@creative-biomart.com](mailto:info@creative-biomart.com) Fax: 1-631-938-8127

45-1 Ramsey Road, Shirley, NY 11967, USA