

## Recombinant human CLU protein (23-449aa), N-6×His-tagged

Cat. No. CLU-13H Lot. No. (See product label)

### SPECIFICATION

<b>Product Overview</b>	Recombinant human CLu protein (23-449aa), fused to His-tag at N-terminus, was expressed in E. coli and purified by using conventional chromatography techniques.
<b>Species</b>	Human
<b>Source</b>	E.coli
<b>ProteinLength</b>	23-449
<b>Description</b>	The protein encoded by this gene is a secreted chaperone that can under some stress conditions also be found in the cell cytosol. It has been suggested to be involved in several basic biological events such as cell death, tumor progression, and neurodegenerative disorders. Alternate splicing results in both coding and non-coding variants.
<b>Form</b>	Liquid
<b>Molecular Mass</b>	54.1 kDa (463aa)
<b>AA Sequence</b>	MRGSHHHHHHGMASMTGGQQMGRDLYDDDDKDRWGSDQTVSDNELQEMSNQG SKYVNKEIQNAVNGVKQIKTLIEKTNEERKTLLSNLEEAKKKKEDALNETRESETKLK ELPGVCNETMMALWEECKPCLKQTCMKFYARVCRSGSLVGRQLEEFNLQSSPFY FWMNGDRIDSLLENDRQQTHMLDVMQDHFSSRASSIIDELFQDRFFFTREPQDITYHYL PFSLPHRRPHFFPKSRIVRSLMPFSPYEPLNFHAMFQPFLEMIHEAQQAMDIHFHS PAFQHPPTEFIREGDDDRDRTVCREIRHNSTGCLRMKDQCDKCREILSVDCSTNNPSQ

 Tel: 1-631-559-9269 1-516-512-3133

 Email: [info@creative-biomart.com](mailto:info@creative-biomart.com)  Fax: 1-631-938-8127

 45-1 Ramsey Road, Shirley, NY 11967, USA

AKLRRELDLQVAERLTRKYNELLKSYQWKMLNTSSLLEQLNEQFNWVSRLANLT  
 QGEDQYYLRVTTVASHTSDSDVPSGVTEVVVVKLFSDPITVTPVEVSRKNPKFMET  
 VAEKALQEYRKKHREE

**Purity** >85% by SDS-PAGE

**Applications** SDS-PAGE

**Storage** Can be stored at +2 to +8 centigrade for 1 week. For long term storage, aliquot and store at -20 to -80 centigrade. Avoid repeated freezing and thawing cycles.

**Concentration** 0.5 mg/mL (determined by Bradford assay)

**Storage Buffer** 20mM Tris-HCl buffer (pH 8.0) containing 0.15M NaCl, 10% glycerol, 1mM DTT

## GENE INFORMATION

**Gene Name** [CLU clusterin \[ Homo sapiens \(human\) \]](#)

**Official Symbol** [CLU](#)

**Synonyms** CLU; clusterin; APOJ, CLI, clusterin (complement lysis inhibitor, SP 40,40, sulfated glycoprotein 2, testosterone repressed prostate message 2, apolipoprotein J); apolipoprotein J; complement lysis inhibitor; KUB1; SGP 2; SP 40; sulfated glycoprotein 2; testosterone repressed prostate message 2; TRPM 2; ku70-binding protein 1; aging-associated protein 4; complement cytolysis inhibitor; complement-associated protein SP-40,40; testosterone-repressed prostate message 2; CLI; AAG4; APOJ; SGP2; APO-J; SGP-2; SP-40; TRPM2; TRPM-2; NA1/NA2; MGC24903

**Gene ID** [1191](#)

 Tel: 1-631-559-9269 1-516-512-3133

 Email: [info@creative-biomart.com](mailto:info@creative-biomart.com)  Fax: 1-631-938-8127

 45-1 Ramsey Road, Shirley, NY 11967, USA

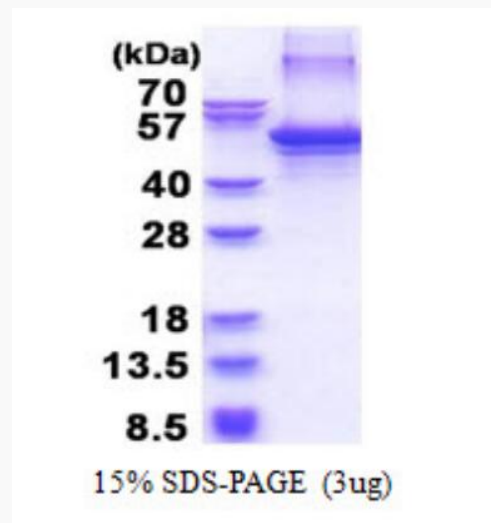
mRNA Refseq [NM\\_001831](#)

Protein Refseq [NP\\_001822](#)

MIM [185430](#)

UniProt ID [P10909](#)

SDS-PAGE



 Tel: 1-631-559-9269 1-516-512-3133

 Email: [info@creative-biomart.com](mailto:info@creative-biomart.com)  Fax: 1-631-938-8127

 45-1 Ramsey Road, Shirley, NY 11967, USA