

Recombinant Human CLU Protein, GST-tagged

Cat. No. CLU-1526H Lot. No. (See product label)

SPECIFICATION

Product Overview	Human CLU partial ORF (NP_001822, 402 a.a. - 501 a.a.) recombinant protein with GST-tag at N-terminal.
Species	Human
Source	Wheat Germ
Description	The protein encoded by this gene is a secreted chaperone that can under some stress conditions also be found in the cell cytosol. It has been suggested to be involved in several basic biological events such as cell death, tumor progression, and neurodegenerative disorders. Alternate splicing results in both coding and non-coding variants.[provided by RefSeq, May 2011]
Molecular Mass	36.74 kDa
AA Sequence	WKMLNTSSLLEQLNEQFNWVSRLANLTQGEDQYYLRVTTVASHTSDSDVPSGVTE VVVKLFDSDPITVTVPEVSRKNPKFMETVAEKALQEYRKKHREE
Applications	Enzyme-linked Immunoabsorbent Assay Western Blot (Recombinant protein) Antibody Production Protein Array
Notes	Best use within three months from the date of receipt of this protein.

 Tel: 1-631-559-9269 1-516-512-3133

 Email: info@creative-biomart.com  Fax: 1-631-938-8127

 45-1 Ramsey Road, Shirley, NY 11967, USA

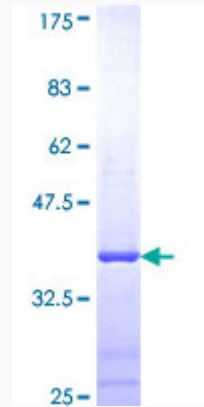
Storage	Store at -80 centigrade. Aliquot to avoid repeated freezing and thawing.
Storage Buffer	50 mM Tris-HCl, 10 mM reduced Glutathione, pH=8.0 in the elution buffer.
GENE INFORMATION	
Gene Name	CLU clusterin [Homo sapiens]
Official Symbol	CLU
Synonyms	CLU; clusterin; APOJ, CLI, clusterin (complement lysis inhibitor, SP 40,40, sulfated glycoprotein 2, testosterone repressed prostate message 2, apolipoprotein J); apolipoprotein J; complement lysis inhibitor; KUB1; SGP 2; SP 40; sulfated glycoprotein 2; testosterone repressed prostate message 2; TRPM 2; ku70-binding protein 1; aging-associated protein 4; complement cytolysis inhibitor; complement-associated protein SP-40,40; testosterone-repressed prostate message 2; CLI; AAG4; APOJ; SGP2; APO-J; SGP-2; SP-40; TRPM2; TRPM-2; NA1/NA2; MGC24903;
Gene ID	1191
mRNA Refseq	NM_001831
Protein Refseq	NP_001822
MIM	185430
UniProt ID	P10909

 Tel: 1-631-559-9269 1-516-512-3133

 Email: info@creative-biomart.com  Fax: 1-631-938-8127

 45-1 Ramsey Road, Shirley, NY 11967, USA

Quality Control
Testing:



12.5% SDS-PAGE Stained with Coomassie Blue.

 Tel: 1-631-559-9269 1-516-512-3133

 Email: info@creative-biomart.com  Fax: 1-631-938-8127

 45-1 Ramsey Road, Shirley, NY 11967, USA