

Recombinant Human CLU Protein (Ser228-Glu449), N-His tagged

Cat. No. CLU-1746H **Lot. No.** (See product label)

SPECIFICATION

Product Overview	Recombinant human CLU (Ser228-Glu449) fused with N-His tag was expressed in E. coli.
Species	Human
Source	E.coli
ProteinLength	Ser228-Glu449
Form	Lyophilized powder/frozen liquid
Molecular Mass	28.19 kDa
Purity	>90% as determined by SDS-PAGE
Notes	For research use only.
Storage	Use a manual defrost freezer and avoid repeated freeze thaw cycles. Store at 2 to 8 centigrade for one week. Store at -20 to -80 centigrade for twelve months from the date of receipt.
Storage Buffer	0.01M PBS, pH 7.4, 0.02% NLS
Reconstitution	Reconstitute in sterile water for a stock solution.

 Tel: 1-631-559-9269 1-516-512-3133

 Email: info@creative-biomart.com  Fax: 1-631-938-8127

 45-1 Ramsey Road, Shirley, NY 11967, USA

Shipping They are shipped out with dry ice/blue ice unless customers require otherwise.

GENE INFORMATION

Gene Name [CLU clusterin \[Homo sapiens \(human\) \]](#)

Official Symbol [CLU](#)

Synonyms

CLU; clusterin; APOJ, CLI, clusterin (complement lysis inhibitor, SP 40, 40, sulfated glycoprotein 2, testosterone repressed prostate message 2, apolipoprotein J); apolipoprotein J; complement lysis inhibitor; KUB1; SGP 2; SP 40; sulfated glycoprotein 2; testosterone repressed prostate message 2; TRPM 2; ku70-binding protein 1; aging-associated protein 4; complement cytolysis inhibitor; complement-associated protein SP-40, 40; testosterone-repressed prostate message 2; CLI; AAG4; APOJ; SGP2; APO-J; SGP-2; SP-40; TRPM2; TRPM-2; NA1/NA2; MGC24903;

Gene ID [1191](#)

mRNA Refseq [NM_001831](#)

Protein Refseq [NP_001822](#)

MIM [185430](#)

UniProt ID [P10909](#)

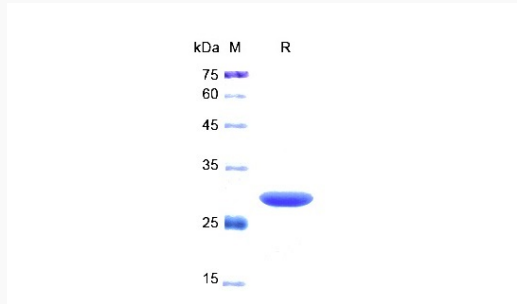
 Tel: 1-631-559-9269 1-516-512-3133

 Email: info@creative-biomart.com  Fax: 1-631-938-8127

 45-1 Ramsey Road, Shirley, NY 11967, USA



SDS-PAGE



Tel: 1-631-559-9269 1-516-512-3133

Email: info@creative-biomart.com Fax: 1-631-938-8127

45-1 Ramsey Road, Shirley, NY 11967, USA