

## Recombinant Human clusterin Protein, His&Flag tagged

Cat. No. CLU-266H Lot. No. (See product label)

### SPECIFICATION

<b>Product Overview</b>	Recombinant human Clusterin protein (P10909-1) (Asp 23-Glu 449) with both His and Flag tag at the C-terminus was expressed in HEK293.
<b>Species</b>	Human
<b>Source</b>	HEK293
<b>ProteinLength</b>	23-449aa
<b>Description</b>	Clusterin (apolipoprotein J) is a 75-80 kDa disulfide-linked heterodimeric protein associated with the clearance of cellular debris and apoptosis. In humans, clusterin is encoded by the CLU gene on chromosome 8. CLU is a molecular chaperone responsible for aiding protein folding of secreted proteins, and its three isoforms have been differentially implicated in pro- or antiapoptotic processes. Through this function, CLU is involved in many diseases related to oxidative stress, including neurodegenerative diseases, cancers, inflammatory diseases, and aging.
<b>Tag</b>	C-His&Flag
<b>Molecular Mass</b>	52.7 kDa
<b>Endotoxin</b>	Less than 1.0 EU/μg by the LAL method.
<b>Purity</b>	>95% as determined by SDS-PAGE.

 Tel: 1-631-559-9269 1-516-512-3133

 Email: [info@creative-biomart.com](mailto:info@creative-biomart.com)  Fax: 1-631-938-8127

 45-1 Ramsey Road, Shirley, NY 11967, USA

<b>Storage</b>	Please avoid repeated freeze-thaw cycles. Samples are stable for up to twelve months from date of receipt at -20 to -80 centigrade. It is recommended that aliquot the reconstituted solution to minimize freeze-thaw cycles.
<b>Storage Buffer</b>	Lyophilized from a 0.2 µm filtered solution of PBS, pH7.4, 5% Trehalose, 5% mannitol.
<b>Reconstitution</b>	Reconstitute at 250 µg/mL in sterile water.
<b>GENE INFORMATION</b>	
<b>Gene Name</b>	CLU clusterin [ Homo sapiens (human) ]
<b>Official Symbol</b>	CLU
<b>Synonyms</b>	CLU; clusterin; APOJ, CLI, clusterin (complement lysis inhibitor, SP 40,40, sulfated glycoprotein 2, testosterone repressed prostate message 2, apolipoprotein J); apolipoprotein J; complement lysis inhibitor; KUB1; SGP 2; SP 40; sulfated glycoprotein 2; testosterone repressed prostate message 2; TRPM 2; ku70-binding protein 1; aging-associated protein 4; complement cytolysis inhibitor; complement-associated protein SP-40,40; testosterone-repressed prostate message 2; CLI; AAG4; APOJ; SGP2; APO-J; SGP-2; SP-40; TRPM2; TRPM-2; NA1/NA2; MGC24903;
<b>Gene ID</b>	1191
<b>mRNA Refseq</b>	NM_001831
<b>Protein Refseq</b>	NP_001822
<b>MIM</b>	185430

 Tel: 1-631-559-9269 1-516-512-3133

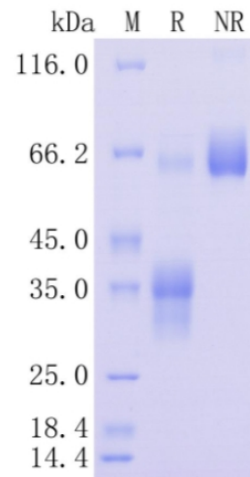
 Email: [info@creative-biomart.com](mailto:info@creative-biomart.com)  Fax: 1-631-938-8127

 45-1 Ramsey Road, Shirley, NY 11967, USA

UniProt ID

P10909

Protein on SDS-  
PAGE under  
reducing (R) and Non  
Reducing condition.



Tel: 1-631-559-9269 1-516-512-3133

Email: [info@creative-biomart.com](mailto:info@creative-biomart.com) Fax: 1-631-938-8127

45-1 Ramsey Road, Shirley, NY 11967, USA