

# Active Recombinant Full Length Human CLU Protein, C-Flag-tagged

**Cat. No.** CLU-273HFL    **Lot. No.** (See product label)

## SPECIFICATION

<b>Product Overview</b>	Recombinant Full Length Human CLU Protein, fused to Flag-tag at C-terminus, was expressed in Mammalian cells.
<b>Species</b>	Human
<b>Source</b>	Mammalian Cells
<b>Description</b>	The protein encoded by this gene is a secreted chaperone that can under some stress conditions also be found in the cell cytosol. It has been suggested to be involved in several basic biological events such as cell death, tumor progression, and neurodegenerative disorders. Alternate splicing results in both coding and non-coding variants.
<b>Form</b>	25 mM Tris HCl, pH 7.3, 100 mM glycine, 10% glycerol.
<b>Bio-activity</b>	Probe target
<b>Molecular Mass</b>	57.7 kDa
<b>AA Sequence</b>	MQVCSQPQRGCVREQSAINTAPPSAHNAASPGGARGHRVPLTEACKDSRIGGMMK TLLLFVGLLLTWESG QVLGDQTVSDNELQEMSNQGSKYVNKEIQNAVNGVKQIKTLI EKTNEERKTLLSNLEEAKKKKEDALNET RESETKLKELPGVCNETMMALWEECKPC LKQTCMKFYARVCRSGSLVGRQLEEFNLQSSPFYFWMNGDR IDLLENDRQQTH MLDVMQDHFSSRASSIIDELFQDRFFTREPQDTHYHLPFSLPHRRPHFFFFPKSRIVRS

 Tel: 1-631-559-9269    1-516-512-3133

 Email: [info@creative-biomart.com](mailto:info@creative-biomart.com)     Fax: 1-631-938-8127

 45-1 Ramsey Road, Shirley, NY 11967, USA



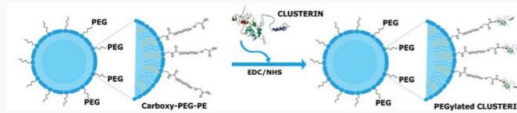
LMPFSPYEPLNFHAMFQPFLEMIHEAQQAMDIIHFHSPAFQHPPTEFIREGDDDDRTVC  
 REIRHNSTGCLRM KDQCDKCREILSVDCSTNNPSQAKLRRELDLQVAERLTRY  
 NELLKSYQWKMLNTSSLLEQLNEQFNW VSRLANLTQGEDQYYLRVTTVASHTSDS  
 DVPSGVTEVVVKLFDSDPITVTVPVEVSRKNPKFMETVAEKA  
 LQEYRKKHREESGPTRTRRLEQKLISEEDLAANDILDYKDDDDKV

<b>Purity</b>	> 80% as determined by SDS-PAGE and Coomassie blue staining.
<b>Stability</b>	Stable for 12 months from the date of receipt of the product under proper storage and handling conditions. Avoid repeated freeze-thaw cycles.
<b>Storage</b>	Store at -80 centigrade.
<b>Concentration</b>	>50 ug/mL as determined by microplate BCA method.
<b>Preparation</b>	Recombinant protein was captured through anti-DDK affinity column followed by conventional chromatography steps.
<b>Protein Families</b>	Druggable Genome, Secreted Protein
<b>Full Length</b>	Full L.

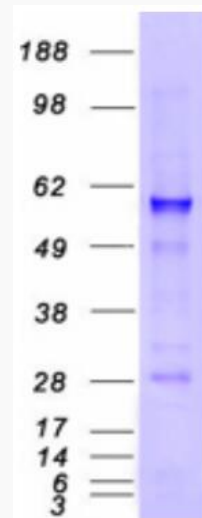
## GENE INFORMATION

<b>Gene Name</b>	CLU clusterin [ Homo sapiens (human) ]
<b>Official Symbol</b>	CLU
<b>Synonyms</b>	CLI; AAG4; APOJ; CLU1; CLU2; KUB1; SGP2; APO-J; SGP-2; SP-40; TRPM2; TRPM-2; NA1/NA2

<b>Gene ID</b>	1191
<b>mRNA Refseq</b>	NM_001831.4
<b>Protein Refseq</b>	NP_001822.3
<b>MIM</b>	185430
<b>UniProt ID</b>	P10909



Schematic representation of the conjugation reaction between PEG-functionalized liposomes and the protein CLU via a carboxy-to-amine reaction in the presence of the crosslinker and stabilizer EDC and NHS. CLU Protein CLU from was used in the conjugation reaction.



Tel: 1-631-559-9269 1-516-512-3133

Email: [info@creative-biomart.com](mailto:info@creative-biomart.com) Fax: 1-631-938-8127

45-1 Ramsey Road, Shirley, NY 11967, USA



Coomassie blue staining of purified CLU protein.

 Tel: 1-631-559-9269 1-516-512-3133

 Email: [info@creative-biomart.com](mailto:info@creative-biomart.com)  Fax: 1-631-938-8127

 45-1 Ramsey Road, Shirley, NY 11967, USA