

# Recombinant Human CLU Protein, Myc/DDK-tagged, C13 and N15-labeled

**Cat. No.** CLU-2751H    **Lot. No.** (See product label)

## SPECIFICATION

### Product Overview

CLU MS Standard C13 and N15-labeled recombinant protein (NP\_001822) with a C-terminal MYC/DDK tag, was expressed in HEK293 cells.

### Species

Human

### Source

HEK293

### Description

The protein encoded by this gene is a secreted chaperone that can under some stress conditions also be found in the cell cytosol. It has been suggested to be involved in several basic biological events such as cell death, tumor progression, and neurodegenerative disorders. Alternate splicing results in both coding and non-coding variants.

### Molecular Mass

57.7 kDa

### AA Sequence

MQVCSQPQRGCVREQSAINTAPPSAHNAASPGGARGHRVPLTEACKDSRIGGMMK  
 TLLLFVGLLLTWESGQVLGDQTVSDNELQEMSNQGSKYVNKEIQNAVNGVKQIKTLI  
 EKTNEERKTLLSNLEEAKKKKEDALNETRESETKLKELPGVCNETMMALWEECKPC  
 LKQTCMKFYARVCRSGSLVGRQLEEFLNQSSPFYFWMNGDRIDSLENDRQQTH  
 MLDVMQDHFSRASSIIDELFQDRFFTREPQDTYHYLPFSLPHRRPHFFFPKSRIVRSL  
 MPFSPYEPLNFHAMFQPFLMIHEAQQAMDIFHSPAFQHPPTEFIREGDDDRTV  
 REIRHNSTGCLRMKDQCDKCREILSVDCSTNNPSQAKLRRELDES LQVAERLTRKY  
 NELLKSYQWKMLNTSSLLEQLNEQFNWVSRLANLTQGEDQYYLRVTTVASHTSDSD

 Tel: 1-631-559-9269    1-516-512-3133

 Email: [info@creative-biomart.com](mailto:info@creative-biomart.com)     Fax: 1-631-938-8127

 45-1 Ramsey Road, Shirley, NY 11967, USA

VPSGVTEVVVKLFDSDPITVTPVEVSRKNPKFMETVAEKALQEYRKKHREESGPTR  
TRRLEQKLISEEDLAANDILDYKDDDDKV

**Purity** > 80% as determined by SDS-PAGE and Coomassie blue staining

**Stability** Stable for 3 months from receipt of products under proper storage and handling conditions.

**Storage** Store at -80 centigrade. Avoid repeated freeze-thaw cycles.

**Concentration** 50 µg/mL as determined by BCA

**Storage Buffer** 100 mM glycine, 25 mM Tris-HCl, pH 7.3.

## GENE INFORMATION

**Gene Name** [CLU clusterin \[ Homo sapiens \(human\) \]](#)

**Official Symbol** [CLU](#)

**Synonyms** CLU; clusterin; APOJ, CLI, clusterin (complement lysis inhibitor, SP 40,40, sulfated glycoprotein 2, testosterone repressed prostate message 2, apolipoprotein J); apolipoprotein J; complement lysis inhibitor; KUB1; SGP 2; SP 40; sulfated glycoprotein 2; testosterone repressed prostate message 2; TRPM 2; ku70-binding protein 1; aging-associated protein 4; complement cytolysis inhibitor; complement-associated protein SP-40,40; testosterone-repressed prostate message 2; CLI; AAG4; APOJ; SGP2; APO-J; SGP-2; SP-40; TRPM2; TRPM-2; NA1/NA2; MGC24903;

**Gene ID** [1191](#)

 Tel: 1-631-559-9269 1-516-512-3133

 Email: [info@creative-biomart.com](mailto:info@creative-biomart.com)  Fax: 1-631-938-8127

 45-1 Ramsey Road, Shirley, NY 11967, USA

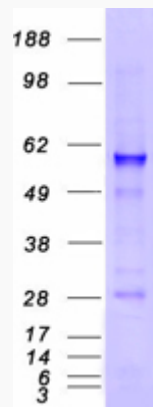
mRNA Refseq [NM\\_001831](#)

Protein Refseq [NP\\_001822](#)

MIM [185430](#)

UniProt ID [P10909](#)

SDS-PAGE



 Tel: 1-631-559-9269 1-516-512-3133

 Email: [info@creative-biomart.com](mailto:info@creative-biomart.com)  Fax: 1-631-938-8127

 45-1 Ramsey Road, Shirley, NY 11967, USA