

Recombinant Human CLU Protein, Myc/DDK-tagged, C13 and N15-labeled

Cat. No. CLU-4585H Lot. No. (See product label)

SPECIFICATION

Product Overview	CLU MS Standard C13 and N15-labeled recombinant protein (NP_976084) with a C-terminal MYC/DDK tag, was expressed in HEK293 cells.
Species	Human
Source	HEK293
Description	The protein encoded by this gene is a secreted chaperone that can under some stress conditions also be found in the cell cytosol. It has been suggested to be involved in several basic biological events such as cell death, tumor progression, and neurodegenerative disorders. Alternate splicing results in both coding and non-coding variants.
Molecular Mass	52.5 kDa
AA Sequence	MMKTLFFFVGLLLTWESGQVLGDQTVSDNELQEMSNQGSKYVNKEIQNAVNGVKQIKT LIEKTNEERKTLLSNLEEAKKKKEDALNETRESETKLKELPGVCNETMMALWEECK PCLKQTCMKFYARVCRSGSLVGRQLEEFLNQSSPFYFWMNGDRIDSLLENDRQ QTHMLDVMQDHFSSRASSIIDELFQDRFFFTREPQDTYHYLPFSLPHRRPHFFFPKSRI VRSLMPFSPYEPLNFHAMFQPFLEMIHEAQQAMDIHFHSPAFQHPPTFEFIREGDDDR TVCREIRHNSTGCLRMKDQCDKCREILSVDCSTNNPSQAKLRRELDLQVAERLT RKYNELLKSYQWKMLNTSSLLEQLNEQFNWVSRLANLTQGEDQYYLRVTTVASHTS DSDVPSGVTEVVVKLFDSDPITVTPVEVSRKNPKFMETVAEKALQEYRKKHREES

 Tel: 1-631-559-9269 1-516-512-3133

 Email: info@creative-biomart.com  Fax: 1-631-938-8127

 45-1 Ramsey Road, Shirley, NY 11967, USA

GPTRTRPLEQKLISEEDLAANDILDYKDDDDKV

Purity > 80% as determined by SDS-PAGE and Coomassie blue staining

Stability Stable for 3 months from receipt of products under proper storage and handling conditions.

Storage Store at -80 centigrade. Avoid repeated freeze-thaw cycles.

Concentration 50 µg/mL as determined by BCA

Storage Buffer 100 mM glycine, 25 mM Tris-HCl, pH 7.3.

GENE INFORMATION

Gene Name [CLU clusterin \[Homo sapiens \(human\) \]](#)

Official Symbol [CLU](#)

Synonyms

CLU; clusterin; APOJ, CLI, clusterin (complement lysis inhibitor, SP 40,40, sulfated glycoprotein 2, testosterone repressed prostate message 2, apolipoprotein J); apolipoprotein J; complement lysis inhibitor; KUB1; SGP 2; SP 40; sulfated glycoprotein 2; testosterone repressed prostate message 2; TRPM 2; ku70-binding protein 1; aging-associated protein 4; complement cytolysis inhibitor; complement-associated protein SP-40,40; testosterone-repressed prostate message 2; CLI; AAG4; APOJ; SGP2; APO-J; SGP-2; SP-40; TRPM2; TRPM-2; NA1/NA2; MGC24903;

Gene ID [1191](#)

mRNA Refseq [NM_203339](#)

 Tel: 1-631-559-9269 1-516-512-3133

 Email: info@creative-biomart.com  Fax: 1-631-938-8127

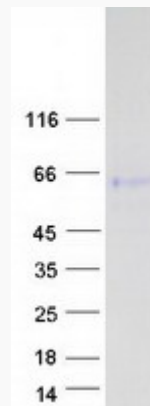
 45-1 Ramsey Road, Shirley, NY 11967, USA

Protein Refseq NP_976084

MIM 185430

UniProt ID P10909

SDS-PAGE



 Tel: 1-631-559-9269 1-516-512-3133

 Email: info@creative-biomart.com  Fax: 1-631-938-8127

 45-1 Ramsey Road, Shirley, NY 11967, USA