

Recombinant Cattle CLU protein, His & T7-tagged

Cat. No. CLU-5772C Lot. No. (See product label)

SPECIFICATION

Product Overview	Recombinant Cattle CLU aa. (Val223~Glu439 (Accession # P17697)) fused with N-terminal His & T7 tag was produced in E. coli cells.
Species	Cattle
Source	E.coli
ProteinLength	Val223~Glu439
Description	This gene encodes a protein that is similar to the human clusterin protein, a secreted chaperone that can also be found in the cell cytosol under certain stress conditions. The human protein has been suggested to be involved in several basic biological events such as cell death, tumor progression, and neurodegenerative disorders.
Form	Freeze-dried powder
Molecular Mass	Predicted Molecular Mass: 28.8kDa
Endotoxin	<1.0EU per 1g (determined by the LAL method)
Purity	>95%
Characteristic	The isoelectric point is 6.4.
Applications	SDS-PAGE; WB; ELISA; IP.

 Tel: 1-631-559-9269 1-516-512-3133

 Email: info@creative-biomart.com  Fax: 1-631-938-8127

 45-1 Ramsey Road, Shirley, NY 11967, USA

Stability	The thermal stability is described by the loss rate. The loss rate was determined by accelerated thermal degradation test, that is, incubate the protein at 37°C for 48h, and no obvious degradation and precipitation were observed. The loss rate is less than 5% within the expiration date under appropriate storage condition.
Storage	Avoid repeated freeze/thaw cycles. Store at 2-8°C for one month. Aliquot and store at -80°C for 12 months.
Storage buffer	Supplied as lyophilized form in PBS, pH7.4, containing 5% trehalose, 0.01% sarcosyl.
Reconstitution	Reconstitute in sterile PBS, pH7.2-pH7.4.

GENE INFORMATION

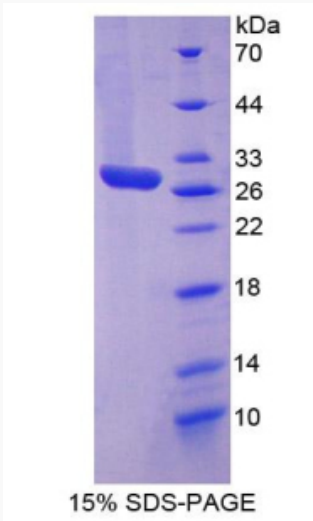
Gene Name	CLU clusterin [<i>Bos taurus</i> (cattle)]
Official Symbol	CLU
Synonyms	gpIII; glycoprotein III; clusterin
Gene ID	280750
mRNA Refseq	NM_173902.2
Protein Refseq	NP_776327.1
UniProt ID	P17697

 Tel: 1-631-559-9269 1-516-512-3133

 Email: info@creative-biomart.com  Fax: 1-631-938-8127

 45-1 Ramsey Road, Shirley, NY 11967, USA

SDS-PAGE



 Tel: 1-631-559-9269 1-516-512-3133

 Email: info@creative-biomart.com  Fax: 1-631-938-8127

 45-1 Ramsey Road, Shirley, NY 11967, USA